

Anti-FFAR4 antibody (221-270 aa) (STJ93329)

GENERAL INFORMATION

| | |
|---------------|--------------------|
| Product Type | Primary antibodies |
| Applications | WB/IF/ELISA |
| Host / Source | Rabbit |
| Reactivity | Human/Mouse/Rat |

PRODUCT PROPERTIES

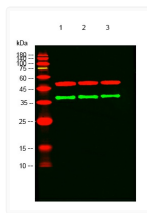
| | |
|---------------------|---|
| Clonality | Polyclonal |
| Concentration | 1 mg/mL |
| Conjugation | Unconjugated |
| Purification | The antibody was affinity-purified from rabbit antiserum by affinity-chromatography using epitope-specific immunogen. |
| Dilution Range | WB 1:500-1:2000 IF 1:200-1:1000 ELISA 1:5000 |
| Formulation | Liquid in PBS containing 50% Glycerol, 0.5% BSA and 0.02% Sodium Azide. |
| Isotype | IgG |
| Molecular Weight | Observed: 38kD |
| Storage Instruction | Store at -20°C for up to 1 year from the date of receipt, and avoid repeat freeze-thaw cycles. |

TARGET INFORMATION

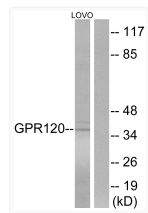
| | |
|------------------|---|
| Gene ID | 338557 |
| Gene Symbol | FFAR4 |
| UniProt ID | FFAR4_HUMAN |
| Immunogen Region | 221-270 aa |
| Specificity | GPR120 Polyclonal Antibody detects endogenous levels of GPR120 protein. |

ADDITIONAL INFORMATION

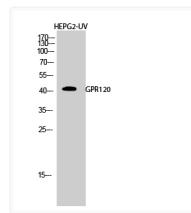
Note STRICTLY FOR FURTHER SCIENTIFIC RESEARCH USE ONLY (RUO). MUST NOT TO BE USED IN DIAGNOSTIC OR THERAPEUTIC APPLICATIONS.



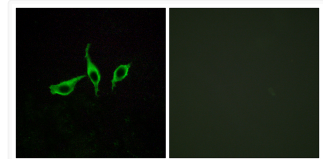
Western blot analysis of lysates from 1) HEPG2-UV, 2) HEK-293T, 3) LOVO cells, (Green) primary antibody was diluted at 1:1000, 4°C over night, secondary antibody (cat: NA) was diluted at 1:10000, 37°C 1hour. (Red) Tubulin Beta monoclonal antibody (5G3) (cat: (STJ96932) antibody was diluted at 1:5000 as loading control, 4°C over night, secondary antibody (cat: NA) was diluted at 1:10000, 37°C 1hour.



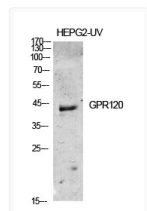
Western blot analysis of lysates from LOVO cells, using GPR120 Antibody. The lane on the right is blocked with the synthesized peptide.



Western blot analysis of HEPG2-UV cells using GPR120 Polyclonal Antibody diluted at 1 : 500



Immunofluorescence analysis of LOVO cells, using GPR120 Antibody. The picture on the right is blocked with the synthesized peptide.



Western blot analysis of various cells using GPR120 Polyclonal Antibody diluted at 1 : 500