

Anti-GPR119 antibody (186-235 aa) (STJ93327)

GENERAL INFORMATION

Product Type	Primary antibodies
Applications	WB/IF/ELISA
Host / Source	Rabbit
Reactivity	Human/Rat/Mouse

PRODUCT PROPERTIES

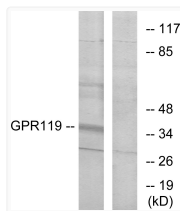
Clonality	Polyclonal
Concentration	1 mg/mL
Conjugation	Unconjugated
Purification	The antibody was affinity-purified from rabbit antiserum by affinity-chromatography using epitope-specific immunogen.
Dilution Range	WB 1:500-1:2000 IF 1:200-1:1000 ELISA 1:10000
Formulation	Liquid in PBS containing 50% Glycerol, 0.5% BSA and 0.02% Sodium Azide.
Isotype	IgG
Molecular Weight	Observed: 37kD
Storage Instruction	Store at -20°C for up to 1 year from the date of receipt, and avoid repeat freeze-thaw cycles.

TARGET INFORMATION

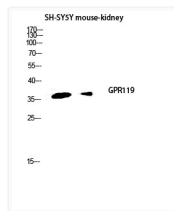
Gene ID	139760
Gene Symbol	GPR119
UniProt ID	GPR119_HUMAN
Immunogen Region	186-235 aa
Specificity	GPR119 Polyclonal Antibody detects endogenous levels of GPR119 protein.

ADDITIONAL INFORMATION

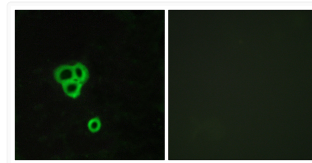
Note **STRICTLY FOR FURTHER SCIENTIFIC RESEARCH USE ONLY (RUO). MUST NOT TO BE USED IN DIAGNOSTIC OR THERAPEUTIC APPLICATIONS.**



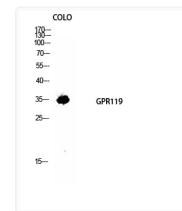
Western blot analysis of lysates from K562 cells, using GPR119 Antibody. The lane on the right is blocked with the synthesized peptide.



Western blot analysis of SH-SY5Y mouse-kidney lysis using GPR119 antibody. Antibody was diluted at 1:1000



Immunofluorescence analysis of MCF7 cells, using GPR119 Antibody. The picture on the right is blocked with the synthesized peptide.



Western blot analysis of COLO cells using GPR119 Polyclonal Antibody diluted at 1: 1000