

Anti-P2RY14 antibody (146-195 aa) (STJ93317)

GENERAL INFORMATION

Product Type	Primary antibodies
Applications	WB/IHC/IF/ELISA
Host / Source	Rabbit
Reactivity	Human/Mouse/Rat

PRODUCT PROPERTIES

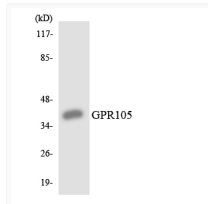
Clonality	Polyclonal
Concentration	1 mg/mL
Conjugation	Unconjugated
Purification	The antibody was affinity-purified from rabbit antiserum by affinity-chromatography using epitope-specific immunogen.
Dilution Range	WB 1:500-1:2000 IHC 1:100-1:300 IF 1:200-1:1000 ELISA 1:10000
Formulation	Liquid in PBS containing 50% Glycerol, 0.5% BSA and 0.02% Sodium Azide.
Isotype	IgG
Molecular Weight	Observed: 39kD
Storage Instruction	Store at -20°C for up to 1 year from the date of receipt, and avoid repeat freeze-thaw cycles.

TARGET INFORMATION

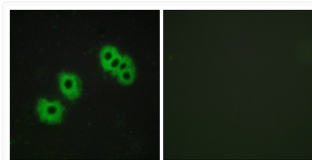
Gene ID	9934
Gene Symbol	P2RY14
UniProt ID	P2Y14_HUMAN
Immunogen Region	146-195 aa
Specificity	GPR105 Polyclonal Antibody detects endogenous levels of GPR105 protein.

ADDITIONAL INFORMATION

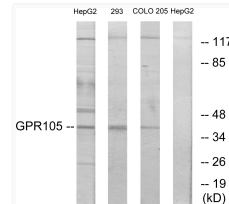
Note STRICTLY FOR FURTHER SCIENTIFIC RESEARCH USE ONLY (RUO). MUST NOT TO BE USED IN DIAGNOSTIC OR THERAPEUTIC APPLICATIONS.



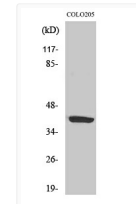
Western blot analysis of the lysates from K562 cells using GPR105 antibody.



Immunofluorescence analysis of MCF7 cells, using GPR105 Antibody. The picture on the right is blocked with the synthesized peptide.



Western blot analysis of lysates from 293, COLO205, and HepG2 cells, using GPR105 Antibody. The lane on the right is blocked with the synthesized peptide.



Western blot analysis of various cells using GPR105 Polyclonal Antibody