

Anti-GLYCTK antibody (101-150 aa) (STJ93296)

GENERAL INFORMATION

Product Type	Primary antibodies
Applications	WB/IHC/IF/ELISA
Host / Source	Rabbit
Reactivity	Human/Mouse/Rat

PRODUCT PROPERTIES

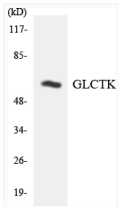
Clonality	Polyclonal
Concentration	1 mg/mL
Conjugation	Unconjugated
Purification	The antibody was affinity-purified from rabbit antiserum by affinity-chromatography using epitope-specific immunogen.
Dilution Range	WB 1:500-1:2000 IHC 1:100-1:300 IF 1:200-1:1000 ELISA 1:20000
Formulation	Liquid in PBS containing 50% Glycerol, 0.5% BSA and 0.02% Sodium Azide.
Isotype	IgG
Molecular Weight	Observed: 60kD
Storage Instruction	Store at -20°C for up to 1 year from the date of receipt, and avoid repeat freeze-thaw cycles.

TARGET INFORMATION

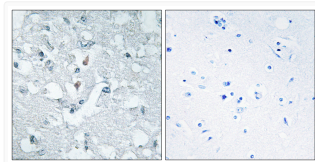
Gene ID	132158
Gene Symbol	GLYCTK
UniProt ID	GLCTK_HUMAN
Immunogen Region	101-150 aa
Specificity	Glycerate Kinase Polyclonal Antibody detects endogenous levels of Glycerate Kinase protein.

ADDITIONAL INFORMATION

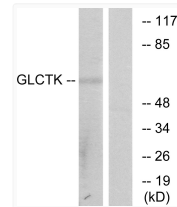
Note **STRICTLY FOR FURTHER SCIENTIFIC RESEARCH USE ONLY (RUO). MUST NOT TO BE USED IN DIAGNOSTIC OR THERAPEUTIC APPLICATIONS.**



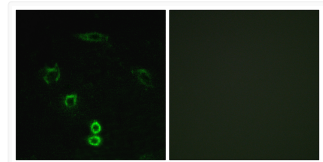
Western blot analysis of the lysates from HUVEC cells using GLCTK antibody.



Immunohistochemistry analysis of paraffin-embedded human brain tissue, using GLCTK Antibody. The picture on the right is blocked with the synthesized peptide.



Western blot analysis of lysates from NIH/3T3 cells, using GLCTK Antibody. The lane on the right is blocked with the synthesized peptide.



Immunofluorescence analysis of A549 cells, using GLCTK Antibody. The picture on the right is blocked with the synthesized peptide.