

## Anti-GLP1R antibody (101-150 aa) (STJ93281)

### GENERAL INFORMATION

|               |                    |
|---------------|--------------------|
| Product Type  | Primary antibodies |
| Applications  | WB/IF/ELISA        |
| Host / Source | Rabbit             |
| Reactivity    | Human/Mouse/Rat    |

### PRODUCT PROPERTIES

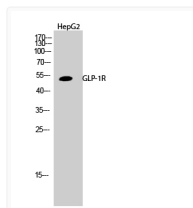
|                     |   |
|---------------------|---|
| Clonality           | Polyclonal  |
| Concentration       | 1 mg/mL   |
| Conjugation         | Unconjugated  |
| Purification        | The antibody was affinity-purified from rabbit antiserum by affinity-chromatography using epitope-specific immunogen. |
| Dilution Range      | WB 1:500-1:2000<br>IF 1:200-1:1000<br>ELISA 1:5000  |
| Formulation         | Liquid in PBS containing 50% Glycerol, 0.5% BSA and 0.02% Sodium Azide.   |
| Isotype             | IgG   |
| Molecular Weight    | Observed: 53kD  |
| Storage Instruction | Store at -20°C for up to 1 year from the date of receipt, and avoid repeat freeze-thaw cycles.                        |

### TARGET INFORMATION

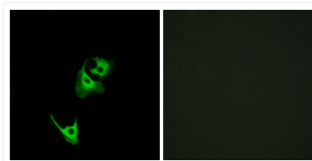
|                  |   |
|------------------|---|
| Gene ID          | <a href="#">2740</a>  |
| Gene Symbol      | <a href="#">GLP1R</a>   |
| UniProt ID       | <a href="#">GLP1R_HUMAN</a>   |
| Immunogen Region | 101-150 aa  |
| Specificity      | GLP-1R Polyclonal Antibody detects endogenous levels of GLP-1R protein. |

### ADDITIONAL INFORMATION

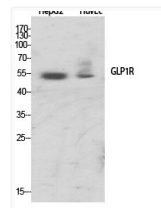
Note **STRICTLY FOR FURTHER SCIENTIFIC RESEARCH USE ONLY (RUO). MUST NOT TO BE USED IN DIAGNOSTIC OR THERAPEUTIC APPLICATIONS.**



Western blot analysis of HepG2 cells using GLP-1R Polyclonal Antibody



Immunofluorescence analysis of HeLa cells, using GLP1R Antibody. The picture on the right is blocked with the synthesized peptide.



Western blot analysis of various cells using GLP-1R Polyclonal Antibody