

Anti-CCDC88A antibody (1383-1432 aa) (STJ93272)

GENERAL INFORMATION

| | |
|---------------|--------------------|
| Product Type | Primary antibodies |
| Applications | IHC/IF/ELISA |
| Host / Source | Rabbit |
| Reactivity | Human/Mouse |

PRODUCT PROPERTIES

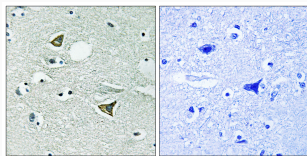
| | |
|---------------------|---|
| Clonality | Polyclonal |
| Concentration | 1 mg/mL |
| Conjugation | Unconjugated |
| Purification | The antibody was affinity-purified from rabbit antiserum by affinity-chromatography using epitope-specific immunogen. |
| Dilution Range | WB 1:500-2000 IHC 1:100-1:300 ELISA 1:5000 IF 1:50-200 |
| Formulation | Liquid in PBS containing 50% Glycerol, 0.5% BSA and 0.02% Sodium Azide. |
| Isotype | IgG |
| Molecular Weight | Calculated: 216kD |
| Storage Instruction | Store at -20°C for up to 1 year from the date of receipt, and avoid repeat freeze-thaw cycles. |

TARGET INFORMATION

| | |
|------------------|---|
| Gene ID | 55704 |
| Gene Symbol | CCDC88A |
| UniProt ID | GRDN_HUMAN |
| Immunogen Region | 1383-1432 aa |
| Specificity | Girdin Polyclonal Antibody detects endogenous levels of Girdin protein. |

ADDITIONAL INFORMATION

Note STRICTLY FOR FURTHER SCIENTIFIC RESEARCH USE ONLY (RUO). MUST NOT TO BE USED IN DIAGNOSTIC OR THERAPEUTIC APPLICATIONS.



Immunohistochemistry analysis of paraffin-embedded human brain tissue, using Girdin Antibody. The picture on the right is blocked with the synthesized peptide.