

## Anti-GHRHR antibody (351-400 aa) (STJ93266)

### GENERAL INFORMATION

Product Type	Primary antibodies
Applications	WB/IF/ELISA
Host / Source	Rabbit
Reactivity	Human/Mouse/Rat

### PRODUCT PROPERTIES

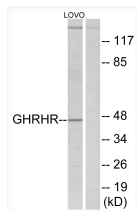
Clonality	Polyclonal
Concentration	1 mg/mL
Conjugation	Unconjugated
Purification	The antibody was affinity-purified from rabbit antiserum by affinity-chromatography using epitope-specific immunogen.
Dilution Range	WB 1:500-1:2000 IF 1:200-1:1000 ELISA 1:20000
Formulation	Liquid in PBS containing 50% Glycerol, 0.5% BSA and 0.02% Sodium Azide.
Isotype	IgG
Molecular Weight	Observed: 47kD
Storage Instruction	Store at -20°C for up to 1 year from the date of receipt, and avoid repeat freeze-thaw cycles.

### TARGET INFORMATION

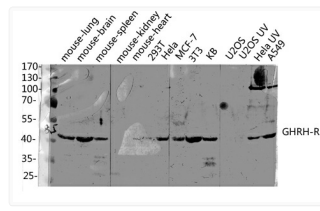
Gene ID	<a href="#">2692</a>
Gene Symbol	<a href="#">GHRHR</a>
UniProt ID	<a href="#">GHRHR_HUMAN</a>
Immunogen Region	351-400 aa
Specificity	GHRH-R Polyclonal Antibody detects endogenous levels of GHRH-R protein.

### ADDITIONAL INFORMATION

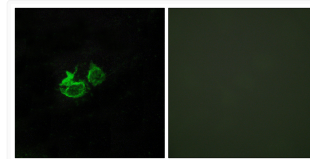
Note STRICTLY FOR FURTHER SCIENTIFIC RESEARCH USE ONLY (RUO). MUST NOT TO BE USED IN DIAGNOSTIC OR THERAPEUTIC APPLICATIONS.



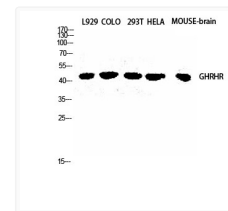
Western blot analysis of lysates from LOVO cells, using GHRHR Antibody. The lane on the right is blocked with the synthesized peptide.



Western blot analysis of various lysis using GHRH-R Polyclonal Antibody diluted at 1: 2000. Secondary antibody was diluted at 1:20000



Immunofluorescence analysis of HUVEC cells, using GHRHR Antibody. The picture on the right is blocked with the synthesized peptide.



Western blot analysis of L929 COLO 293T HELA MOUSE-brain cells using GHRH-R Polyclonal Antibody diluted at 1: 2000