

## Anti-GUCY1A1 antibody (374-423 aa) (STJ93250)

### GENERAL INFORMATION

Product Type	Primary antibodies
Applications	WB/CoIP/IHC/IF/ELISA
Host / Source	Rabbit
Reactivity	Human/Mouse/Rat

### PRODUCT PROPERTIES

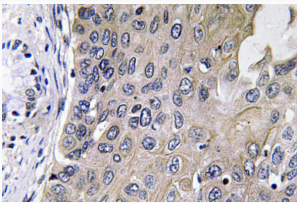
Clonality	Polyclonal
Concentration	1 mg/mL
Conjugation	Unconjugated
Purification	The antibody was affinity-purified from rabbit antiserum by affinity-chromatography using epitope-specific immunogen.
Dilution Range	WB 1:500-1:2000 IHC 1:100-1:300 ELISA 1:40000 IF 1:50-200
Formulation	Liquid in PBS containing 50% Glycerol, 0.5% BSA and 0.02% Sodium Azide.
Isotype	IgG
Molecular Weight	Observed: 77kD
Storage Instruction	Store at -20°C for up to 1 year from the date of receipt, and avoid repeat freeze-thaw cycles.

### TARGET INFORMATION

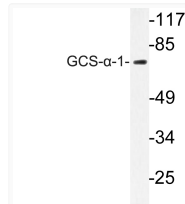
Gene ID	<a href="#">2982</a>
Gene Symbol	<a href="#">GUCY1A1</a>
UniProt ID	<a href="#">GCYA1_HUMAN</a>
Immunogen Region	374-423 aa
Specificity	GCS-Alpha-1 Polyclonal Antibody detects endogenous levels of GCS-Alpha-1 protein.

### ADDITIONAL INFORMATION

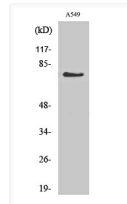
Note STRICTLY FOR FURTHER SCIENTIFIC RESEARCH USE ONLY (RUO). MUST NOT TO BE USED IN DIAGNOSTIC OR THERAPEUTIC APPLICATIONS.



Immunohistochemistry analysis of GCS-Alpha-1 antibody in paraffin-embedded human lung carcinoma tissue.



Western blot analysis of lysate from A549 cells, using GCS-Alpha-1 antibody.



Western blot analysis of various cells using GCS-Alpha-1 Polyclonal Antibody