

Anti-GCLM antibody (42-91 aa) (STJ93249)

GENERAL INFORMATION

Product Type	Primary antibodies
Applications	WB/IHC/IF/ELISA
Host / Source	Rabbit
Reactivity	Human/Mouse/Rat/Monkey

PRODUCT PROPERTIES

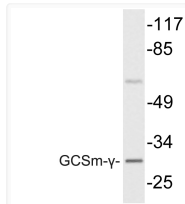
Clonality	Polyclonal
Concentration	1 mg/mL
Conjugation	Unconjugated
Purification	The antibody was affinity-purified from rabbit antiserum by affinity-chromatography using epitope-specific immunogen.
Dilution Range	WB 1:500-1:2000 IHC 1:100-1:300 ELISA 1:10000 IF 1:50-200
Formulation	Liquid in PBS containing 50% Glycerol, 0.5% BSA and 0.02% Sodium Azide.
Isotype	IgG
Molecular Weight	Observed: 31kD
Storage Instruction	Store at -20°C for up to 1 year from the date of receipt, and avoid repeat freeze-thaw cycles.

TARGET INFORMATION

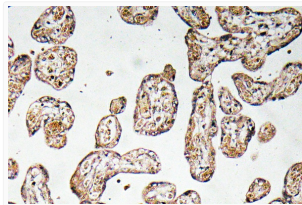
Gene ID	2730
Gene Symbol	GCLM
UniProt ID	GSHO_HUMAN
Immunogen Region	42-91 aa
Specificity	GCSm-Gamma Polyclonal Antibody detects endogenous levels of GCSm-Gamma protein.

ADDITIONAL INFORMATION

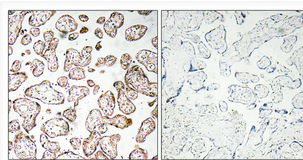
Note STRICTLY FOR FURTHER SCIENTIFIC RESEARCH USE ONLY (RUO). MUST NOT TO BE USED IN DIAGNOSTIC OR THERAPEUTIC APPLICATIONS.



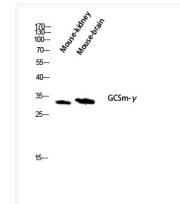
Western blot analysis of lysate from COS7 cells, using GCSm-Gamma antibody.



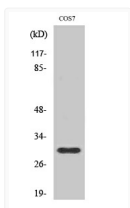
Immunohistochemistry analysis of GCSm-Gamma antibody in paraffin-embedded human prostate carcinoma tissue.



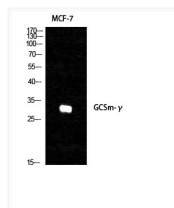
Immunohistochemical analysis of paraffin-embedded Human placenta. Antibody was diluted at 1:100 (4°C overnight). High-pressure and temperature Tris-EDTA, pH8.0 was used for antigen retrieval. Negative contrl (right) obtained from antibody was pre-absorbed by immunogen peptide.



Western blot analysis of Mouse-kidney mouse-brain lysis using GCSm-Gamma antibody. Antibody was diluted at 1:1000



Western blot analysis of COS7 cells using GCSm-Gamma Polyclonal Antibody diluted at 1: 1000



Western blot analysis of various cells using GCSm-Gamma Polyclonal Antibody diluted at 1: 1000