

Anti-GAS6 antibody (291-340 aa) (STJ93218)

GENERAL INFORMATION

| | |
|---------------|--------------------|
| Product Type | Primary antibodies |
| Applications | WB/IHC/IF/ELISA |
| Host / Source | Rabbit |
| Reactivity | Human/Rat/Mouse |

PRODUCT PROPERTIES

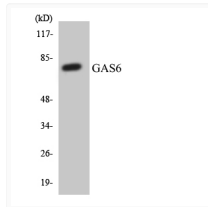
| | |
|---------------------|---|
| Clonality | Polyclonal |
| Concentration | 1 mg/mL |
| Conjugation | Unconjugated |
| Purification | The antibody was affinity-purified from rabbit antiserum by affinity-chromatography using epitope-specific immunogen. |
| Dilution Range | WB 1:500-1:2000 IHC 1:100-1:300 ELISA 1:40000 IF 1:50-200 |
| Formulation | Liquid in PBS containing 50% Glycerol, 0.5% BSA and 0.02% Sodium Azide. |
| Isotype | IgG |
| Molecular Weight | Observed: 75kD |
| Storage Instruction | Store at -20°C for up to 1 year from the date of receipt, and avoid repeat freeze-thaw cycles. |

TARGET INFORMATION

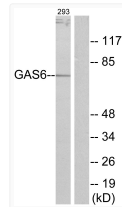
| | |
|------------------|---|
| Gene ID | 2621 |
| Gene Symbol | GAS6 |
| UniProt ID | GAS6_HUMAN |
| Immunogen Region | 291-340 aa |
| Specificity | Gas6 Polyclonal Antibody detects endogenous levels of Gas6 protein. |

ADDITIONAL INFORMATION

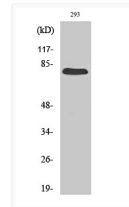
Note STRICTLY FOR FURTHER SCIENTIFIC RESEARCH USE ONLY (RUO). MUST NOT TO BE USED IN DIAGNOSTIC OR THERAPEUTIC APPLICATIONS.



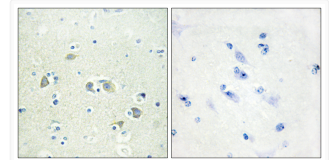
Western blot analysis of the lysates from HT-29 cells using GAS6 antibody.



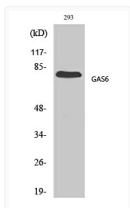
Western blot analysis of lysates from 293 cells, using GAS6 Antibody. The lane on the right is blocked with the synthesized peptide.



Western blot analysis of 293 cells using Gas6 Polyclonal Antibody diluted at 1 : 500



Immunohistochemistry analysis of paraffin-embedded human brain tissue, using GAS6 Antibody. The picture on the right is blocked with the synthesized peptide.



Western blot analysis of various cells using Gas6 Polyclonal Antibody diluted at 1 : 500