

Anti-SLC6A1 antibody (381-430 aa) (STJ93184)

GENERAL INFORMATION

| | |
|---------------|--------------------|
| Product Type | Primary antibodies |
| Applications | WB/ELISA |
| Host / Source | Rabbit |
| Reactivity | Human/Mouse/Rat |

PRODUCT PROPERTIES

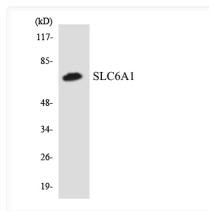
| | |
|---------------------|---|
| Clonality | Polyclonal |
| Concentration | 1 mg/mL |
| Conjugation | Unconjugated |
| Purification | The antibody was affinity-purified from rabbit antiserum by affinity-chromatography using epitope-specific immunogen. |
| Dilution Range | WB 1:500-1:2000 ELISA 1:40000 |
| Formulation | Liquid in PBS containing 50% Glycerol, 0.5% BSA and 0.02% Sodium Azide. |
| Isotype | IgG |
| Molecular Weight | Observed: 67kD |
| Storage Instruction | Store at -20°C for up to 1 year from the date of receipt, and avoid repeat freeze-thaw cycles. |

TARGET INFORMATION

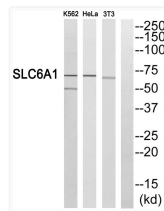
| | |
|------------------|---|
| Gene ID | 6529 |
| Gene Symbol | SLC6A1 |
| UniProt ID | SC6A1_HUMAN |
| Immunogen Region | 381-430 aa |
| Specificity | GABA T-1 Polyclonal Antibody detects endogenous levels of GABA T-1 protein. |

ADDITIONAL INFORMATION

Note **STRICTLY FOR FURTHER SCIENTIFIC RESEARCH USE ONLY (RUO). MUST NOT TO BE USED IN DIAGNOSTIC OR THERAPEUTIC APPLICATIONS.**



Western blot analysis of the lysates from HeLa cells using SLC6A1 antibody.



Western blot analysis of SLC6A1 Antibody. The lane on the right is blocked with the SLC6A1 peptide.