

Anti-GPR132 antibody (293-342 aa) (STJ93172)

GENERAL INFORMATION

Product Type	Primary antibodies
Applications	WB/IF/ELISA
Host / Source	Rabbit
Reactivity	Human/Mouse/Monkey

PRODUCT PROPERTIES

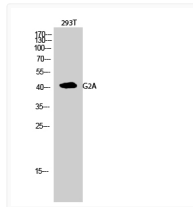
Clonality	Polyclonal
Concentration	1 mg/mL
Conjugation	Unconjugated
Purification	The antibody was affinity-purified from rabbit antiserum by affinity-chromatography using epitope-specific immunogen.
Dilution Range	WB 1:500-1:2000 IHC-P 1:100-300 ELISA 1:20000 IF 1:100-300
Formulation	Liquid in PBS containing 50% Glycerol, 0.5% BSA and 0.02% Sodium Azide.
Isotype	IgG
Molecular Weight	Observed: 42kD
Storage Instruction	Store at -20°C for up to 1 year from the date of receipt, and avoid repeat freeze-thaw cycles.

TARGET INFORMATION

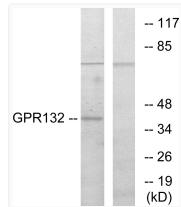
Gene ID	29933
Gene Symbol	GPR132
UniProt ID	GP132_HUMAN
Immunogen Region	293-342 aa
Specificity	G2A Polyclonal Antibody detects endogenous levels of G2A protein.

ADDITIONAL INFORMATION

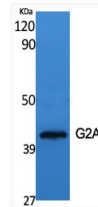
Note STRICTLY FOR FURTHER SCIENTIFIC RESEARCH USE ONLY (RUO). MUST NOT TO BE USED IN DIAGNOSTIC OR THERAPEUTIC APPLICATIONS.



Western blot analysis of 293T cells using G2A Polyclonal Antibody diluted at 1: 500



Western blot analysis of lysates from COS7 cells, using GPR132 Antibody. The lane on the right is blocked with the synthesized peptide.



Western blot analysis of various cells using G2A Polyclonal Antibody diluted at 1: 500