

Anti-FRS2 antibody (162-211 aa) (STJ93156)

GENERAL INFORMATION

Product Type	Primary antibodies
Applications	WB/ELISA
Host / Source	Rabbit
Reactivity	Human/Mouse

PRODUCT PROPERTIES

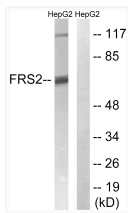
Clonality	Polyclonal
Concentration	1 mg/mL
Conjugation	Unconjugated
Purification	The antibody was affinity-purified from rabbit antiserum by affinity-chromatography using epitope-specific immunogen.
Dilution Range	WB 1:500-1:2000 ELISA 1:40000
Formulation	Liquid in PBS containing 50% Glycerol, 0.5% BSA and 0.02% Sodium Azide.
Isotype	IgG
Molecular Weight	Observed: 65kD
Storage Instruction	Store at -20°C for up to 1 year from the date of receipt, and avoid repeat freeze-thaw cycles.

TARGET INFORMATION

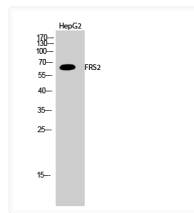
Gene ID	10818
Gene Symbol	FRS2
UniProt ID	FRS2_HUMAN
Immunogen Region	162-211 aa
Specificity	FRS2 Polyclonal Antibody detects endogenous levels of FRS2 protein.

ADDITIONAL INFORMATION

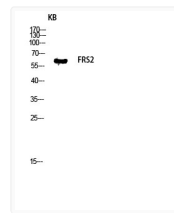
Note **STRICTLY FOR FURTHER SCIENTIFIC RESEARCH USE ONLY (RUO). MUST NOT BE USED IN DIAGNOSTIC OR THERAPEUTIC APPLICATIONS.**



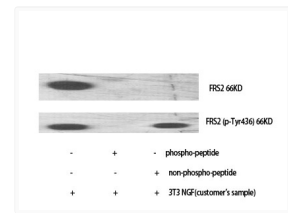
Western blot analysis of lysates from HepG2 cells, using FRS2 Antibody. The lane on the right is blocked with the synthesized peptide.



Western blot analysis of HepG2 cells using FRS2 Polyclonal Antibody diluted at 1: 1000



Western blot analysis of KB lysis using FRS2 antibody. Antibody was diluted at 1:1000



Western blot analysis of various cells using FRS2 Polyclonal Antibody diluted at 1: 1000