

## Anti-FZD7 antibody (45-94 aa) (STJ93151)

### GENERAL INFORMATION

|               |                    |
|---------------|--------------------|
| Product Type  | Primary antibodies |
| Applications  | WB/FC/IF/ELISA     |
| Host / Source | Rabbit             |
| Reactivity    | Human/Mouse        |

### PRODUCT PROPERTIES

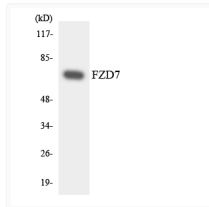
|                     |   |
|---------------------|---|
| Clonality           | Polyclonal  |
| Concentration       | 1 mg/mL   |
| Conjugation         | Unconjugated  |
| Purification        | The antibody was affinity-purified from rabbit antiserum by affinity-chromatography using epitope-specific immunogen. |
| Dilution Range      | WB 1:500-2000<br>FC 1:50-200<br>IF ICC 1:100-500<br>ELISA 1:5000-20000  |
| Formulation         | Liquid in PBS containing 50% Glycerol, 0.5% BSA and 0.02% Sodium Azide.   |
| Isotype             | IgG   |
| Molecular Weight    | Observed: 64kD  |
| Storage Instruction | Store at -20°C for up to 1 year from the date of receipt, and avoid repeat freeze-thaw cycles.                        |

### TARGET INFORMATION

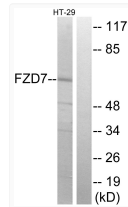
|                  |   |
|------------------|---|
| Gene ID          | <a href="#">8324</a>  |
| Gene Symbol      | <a href="#">FZD7</a>  |
| UniProt ID       | <a href="#">FZD7_HUMAN</a>  |
| Immunogen Region | 45-94 aa  |
| Specificity      | Frizzled-7 Polyclonal Antibody detects endogenous levels of Frizzled-7 protein. |

### ADDITIONAL INFORMATION

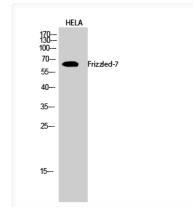
Note **STRICTLY FOR FURTHER SCIENTIFIC RESEARCH USE ONLY (RUO). MUST NOT TO BE USED IN DIAGNOSTIC OR THERAPEUTIC APPLICATIONS.**



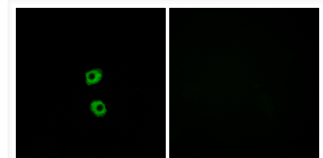
Western blot analysis of the lysates from HUVEC cells using FZD7 antibody.



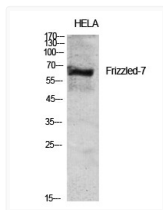
Western blot analysis of lysates from HT-29 cells, using FZD7 Antibody. The lane on the right is blocked with the synthesized peptide.



Western blot analysis of HELA cells using Frizzled-7 Polyclonal Antibody diluted at 1: 2000



Immunofluorescence analysis of MCF7 cells, using FZD7 Antibody. The picture on the right is blocked with the synthesized peptide.



Western blot analysis of various cells using Frizzled-7 Polyclonal Antibody diluted at 1: 2000