

Anti-FoxD4/D4L antibody (281-330 aa) (STJ93110)

GENERAL INFORMATION

Product Type	Primary antibodies
Applications	WB/ELISA
Host / Source	Rabbit
Reactivity	Human/Rat/Mouse

PRODUCT PROPERTIES

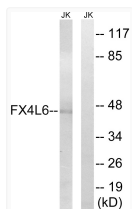
Clonality	Polyclonal
Concentration	1 mg/mL
Conjugation	Unconjugated
Purification	The antibody was affinity-purified from rabbit antiserum by affinity-chromatography using epitope-specific immunogen.
Dilution Range	WB 1:500-1:2000 ELISA 1:40000
Formulation	Liquid in PBS containing 50% Glycerol, 0.5% BSA and 0.02% Sodium Azide.
Isotype	IgG
Molecular Weight	Observed: 46kD
Storage Instruction	Store at -20°C for up to 1 year from the date of receipt, and avoid repeat freeze-thaw cycles.

TARGET INFORMATION

Gene ID	286380 2298 653427
Gene Symbol	FOXD4L3 FOXD4 FX4L3_HUMAN FOXD4_HUMAN FX4L5_HUMAN
Immunogen Region	281-330 aa
Specificity	FoxD4/D4L Polyclonal Antibody detects endogenous levels of FoxD4/D4L protein.

ADDITIONAL INFORMATION

Note STRICTLY FOR FURTHER SCIENTIFIC RESEARCH USE ONLY (RUO). MUST NOT TO BE USED IN DIAGNOSTIC OR THERAPEUTIC APPLICATIONS.



Western blot analysis of lysates from Jurkat cells, using FOXD4/L2/L3/L4/L5/L6 Antibody. The lane on the right is blocked with the synthesized peptide.