

## Anti-MAPK1 antibody (136-185 aa) (STJ92992)

### GENERAL INFORMATION

Product Type	Primary antibodies
Applications	WB/IHC/IF/ELISA
Host / Source	Rabbit
Reactivity	Human/Mouse/Rat

### PRODUCT PROPERTIES

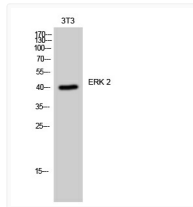
Clonality	Polyclonal
Concentration	1 mg/mL
Conjugation	Unconjugated
Purification	The antibody was affinity-purified from rabbit antiserum by affinity-chromatography using epitope-specific immunogen.
Dilution Range	WB 1:500-1:2000 IHC 1:100-1:300 IF 1:200-1:1000 ELISA 1:5000
Formulation	Liquid in PBS containing 50% Glycerol, 0.5% BSA and 0.02% Sodium Azide.
Isotype	IgG
Molecular Weight	Observed: 48kD
Storage Instruction	Store at -20°C for up to 1 year from the date of receipt, and avoid repeat freeze-thaw cycles.

### TARGET INFORMATION

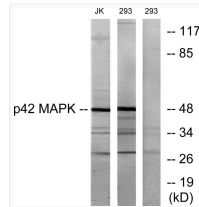
Gene ID	<a href="#">5594</a>
Gene Symbol	<a href="#">MAPK1</a>
UniProt ID	<a href="#">MK01_HUMAN</a>
Immunogen Region	136-185 aa
Specificity	ERK 2 Polyclonal Antibody detects endogenous levels of ERK 2 protein.

### ADDITIONAL INFORMATION

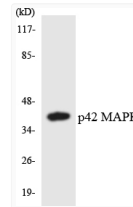
Note STRICTLY FOR FURTHER SCIENTIFIC RESEARCH USE ONLY (RUO). MUST NOT TO BE USED IN DIAGNOSTIC OR THERAPEUTIC APPLICATIONS.



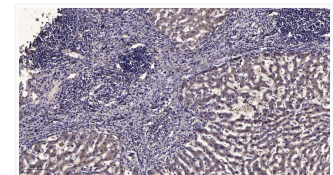
Western blot analysis of 3T3 cells using ERK 2 polyclonal antibody diluted at 1:2000 STJ92992



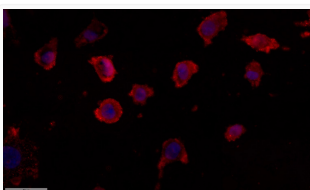
Western blot analysis of lysates from Jurkat and 293 cells, using p42 MAPK Antibody. The lane on the right was blocked STJ92992



Western blot analysis of the lysates from HUVEC cells using p42 MAPK antibody. STJ92992



Immunohistochemical analysis of paraffin-embedded human liver cancer. 1, Antibody was diluted at 1:200 (4° overnight). STJ92992



Immunofluorescence analysis of MCF7 cells. 1, Primary antibody was diluted at 1:100 (4°C overnight). 2, Goat Anti Rabbit STJ92992