

Anti-MAPK3 antibody (161-210 aa) (STJ92987)

GENERAL INFORMATION

Product Type	Primary antibodies
Applications	WB/IF/ELISA
Host / Source	Rabbit
Reactivity	Human/Mouse/Rat

PRODUCT PROPERTIES

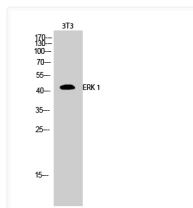
Clonality	Polyclonal
Concentration	1 mg/mL
Conjugation	Unconjugated
Purification	The antibody was affinity-purified from rabbit antiserum by affinity-chromatography using epitope-specific immunogen.
Dilution Range	WB 1:500-1:2000 IF 1:200-1:1000 ELISA 1:40000
Formulation	Liquid in PBS containing 50% Glycerol, 0.5% BSA and 0.02% Sodium Azide.
Isotype	IgG
Molecular Weight	Observed: 45kD
Storage Instruction	Store at -20°C for up to 1 year from the date of receipt, and avoid repeat freeze-thaw cycles.

TARGET INFORMATION

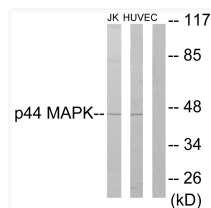
Gene ID	5595
Gene Symbol	MAPK3
UniProt ID	MK03_HUMAN
Immunogen Region	161-210 aa
Specificity	ERK 1 Polyclonal Antibody detects endogenous levels of ERK 1 protein.

ADDITIONAL INFORMATION

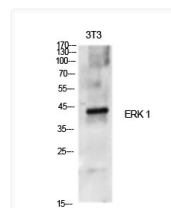
Note STRICTLY FOR FURTHER SCIENTIFIC RESEARCH USE ONLY (RUO). MUST NOT TO BE USED IN DIAGNOSTIC OR THERAPEUTIC APPLICATIONS.



Western blot analysis of 3T3 cells using ERK 1 Polyclonal Antibody diluted at 1: 500



Western blot analysis of lysates from Jurkat and HUVEC cells, using p44 MAPK Antibody. The lane on the right is blocked with the synthesized peptide.



Western blot analysis of various cells using ERK 1 Polyclonal Antibody diluted at 1: 500