

Anti-DNAJB11 antibody (31-80 aa) (STJ92981)

GENERAL INFORMATION

Product Type	Primary antibodies
Applications	WB/IHC/IF/ELISA
Host / Source	Rabbit
Reactivity	Human/Mouse/Rat

PRODUCT PROPERTIES

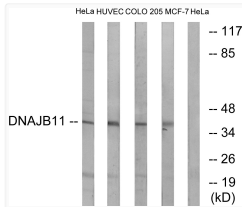
Clonality	Polyclonal
Concentration	1 mg/mL
Conjugation	Unconjugated
Purification	The antibody was affinity-purified from rabbit antiserum by affinity-chromatography using epitope-specific immunogen.
Dilution Range	WB 1:500-1:2000 IHC 1:100-1:300 ELISA 1:20000 IF 1:50-200
Formulation	Liquid in PBS containing 50% Glycerol, 0.5% BSA and 0.02% Sodium Azide.
Isotype	IgG
Molecular Weight	Observed: 40kD
Storage Instruction	Store at -20°C for up to 1 year from the date of receipt, and avoid repeat freeze-thaw cycles.

TARGET INFORMATION

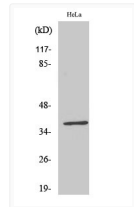
Gene ID	51726
Gene Symbol	DNAJB11
UniProt ID	DJB11_HUMAN
Immunogen Region	31-80 aa
Specificity	ERdj3 Polyclonal Antibody detects endogenous levels of ERdj3 protein.

ADDITIONAL INFORMATION

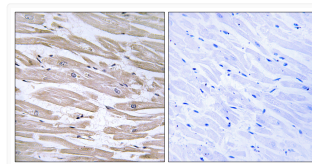
Note **STRICTLY FOR FURTHER SCIENTIFIC RESEARCH USE ONLY (RUO). MUST NOT TO BE USED IN DIAGNOSTIC OR THERAPEUTIC APPLICATIONS.**



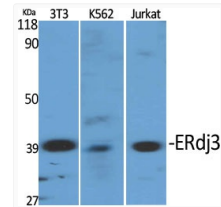
Western blot analysis of lysates from HeLa, HUVEC, COLO, and MCF-7 cells, using DNAJB11 Antibody. The lane on the right is blocked with the synthesized peptide.



Western blot analysis of MCF7 cells using ERdj3 Polyclonal Antibody diluted at 1:2000



Immunohistochemistry analysis of paraffin-embedded human heart tissue, using DNAJB11 Antibody. The picture on the right is blocked with the synthesized peptide.



Western blot analysis of various cells using ERdj3 Polyclonal Antibody diluted at 1:2000