

## Anti-ETV1 antibody (10-59 aa) (STJ92969)

### GENERAL INFORMATION

Product Type	Primary antibodies
Applications	WB/IHC/IF/ELISA
Host / Source	Rabbit
Reactivity	Human/Mouse

### PRODUCT PROPERTIES

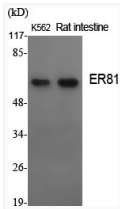
Clonality	Polyclonal
Concentration	1 mg/mL
Conjugation	Unconjugated
Purification	The antibody was affinity-purified from rabbit antiserum by affinity-chromatography using epitope-specific immunogen.
Dilution Range	WB 1:500-1:2000 IHC 1:100-1:300 ELISA 1:10000 IF 1:50-200
Formulation	Liquid in PBS containing 50% Glycerol, 0.5% BSA and 0.02% Sodium Azide.
Isotype	IgG
Molecular Weight	Observed: 60kD
Storage Instruction	Store at -20°C for up to 1 year from the date of receipt, and avoid repeat freeze-thaw cycles.

### TARGET INFORMATION

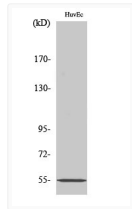
Gene ID	<a href="#">2115</a>
Gene Symbol	<a href="#">ETV1</a>
UniProt ID	<a href="#">ETV1_HUMAN</a>
Immunogen Region	10-59 aa
Specificity	ER81 Polyclonal Antibody detects endogenous levels of ER81 protein.

### ADDITIONAL INFORMATION

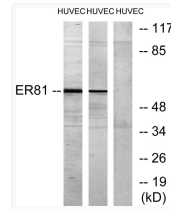
Note STRICTLY FOR FURTHER SCIENTIFIC RESEARCH USE ONLY (RUO). MUST NOT TO BE USED IN DIAGNOSTIC OR THERAPEUTIC APPLICATIONS.



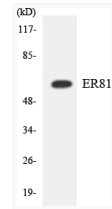
Western blot analysis of various cells using ER81 polyclonal antibody on cells' nuclei extracted by Minute™ cytoplasmic STJ92969



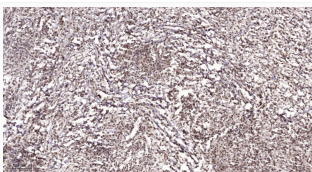
Western blot analysis of HUVEc cells using ER81 polyclonal antibody, cells' nucleus extracted by Minute™ Cytoplasmic STJ92969



Western blot analysis of lysates from HUVEc cells treated with PMA 125 ng/ml for 30', using ER81 Antibody. The lane on STJ92969



Western blot analysis of the lysates from HT-29 cells using ER81 antibody. STJ92969



Immunohistochemical analysis of paraffin-embedded human colon cancer. 1, Antibody was diluted at 1:200 (4° overnight). STJ92969