

## Anti-Ephrin-B1/2 antibody (284-333 aa) (STJ92960)

### GENERAL INFORMATION

Product Type	Primary antibodies
Applications	WB/IHC/IF/ELISA
Host / Source	Rabbit
Reactivity	Human/Mouse/Rat

### PRODUCT PROPERTIES

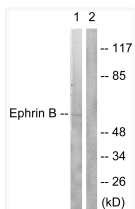
Clonality	Polyclonal
Concentration	1 mg/mL
Conjugation	Unconjugated
Purification	The antibody was affinity-purified from rabbit antiserum by affinity-chromatography using epitope-specific immunogen.
Dilution Range	WB 1:500-1:2000 IHC 1:100-1:300 ELISA 1:40000 IF 1:50-200
Formulation	Liquid in PBS containing 50% Glycerol, 0.5% BSA and 0.02% Sodium Azide.
Isotype	IgG
Molecular Weight	Observed: 59kD
Storage Instruction	Store at -20°C for up to 1 year from the date of receipt, and avoid repeat freeze-thaw cycles.

### TARGET INFORMATION

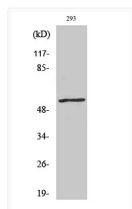
Gene ID	<a href="#">1948</a> <a href="#">1947</a>
Gene Symbol	<a href="#">EFNB2</a> <a href="#">EFNB1</a>
UniProt ID	<a href="#">EFNB2_HUMAN</a> <a href="#">EFNB1_HUMAN</a>
Immunogen Region	284-333 aa
Specificity	Ephrin-B1/2 Polyclonal Antibody detects endogenous levels of Ephrin-B1/2 protein.

### ADDITIONAL INFORMATION

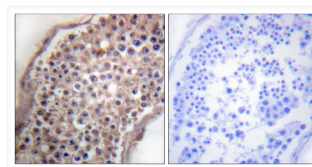
Note **STRICTLY FOR FURTHER SCIENTIFIC RESEARCH USE ONLY (RUO). MUST NOT TO BE USED IN DIAGNOSTIC OR THERAPEUTIC APPLICATIONS.**



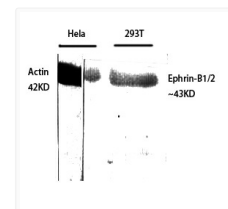
Western blot analysis of lysates from 293 cells, treated with EGF 200ng/ml 5', using EFNB1/2 Antibody. The lane on the right is blocked with the synthesized peptide.



Western blot analysis of 293 cells using Ephrin-B1/2 Polyclonal Antibody diluted at 1: 500



Immunohistochemistry analysis of paraffin-embedded human testis tissue, using EFNB1/2 Antibody. The picture on the right is blocked with the synthesized peptide.



Western blot analysis of various cells using Ephrin-B1/2 Polyclonal Antibody diluted at 1: 500