

Anti-EphB1/2/3/4 antibody (566-615 aa) (STJ92950)

GENERAL INFORMATION

Product Type	Primary antibodies
Applications	WB/IHC/IF/ELISA
Host / Source	Rabbit
Reactivity	Human/Mouse

PRODUCT PROPERTIES

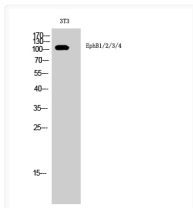
Clonality	Polyclonal
Concentration	1 mg/mL
Conjugation	Unconjugated
Purification	The antibody was affinity-purified from rabbit antiserum by affinity-chromatography using epitope-specific immunogen.
Dilution Range	WB 1:500-1:2000 IHC 1:100-1:300 ELISA 1:10000 IF 1:50-200
Formulation	Liquid in PBS containing 50% Glycerol, 0.5% BSA and 0.02% Sodium Azide.
Isotype	IgG
Molecular Weight	Observed: 118kD
Storage Instruction	Store at -20°C for up to 1 year from the date of receipt, and avoid repeat freeze-thaw cycles.

TARGET INFORMATION

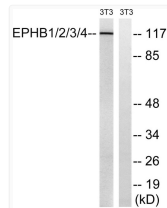
Gene ID	2048 2049 2050 EPHB2 EPHB3 EPHB2_HUMAN EPHB3_HUMAN EPHB4_HUMAN
Immunogen Region	566-615 aa
Specificity	EphB1/2/3/4 Polyclonal Antibody detects endogenous levels of EphB1/2/3/4 protein.

ADDITIONAL INFORMATION

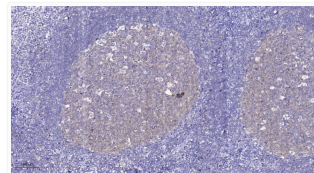
Note STRICTLY FOR FURTHER SCIENTIFIC RESEARCH USE ONLY (RUO). MUST NOT TO BE USED IN DIAGNOSTIC OR THERAPEUTIC APPLICATIONS.



Western blot analysis of 3T3 cells using EphB1/2/3/4 Polyclonal Antibody STJ92950



Western blot analysis of lysates from NIH/3T3 cells treated with heat shock, using EPHB1/2/3/4 Antibody. The lane on STJ92950



Immunohistochemical analysis of paraffin-embedded human tonsil. 1, Tris-EDTA, pH 9.0 was used for antigen retrieval. 2, STJ92950