

Anti-EphB1/2/3 antibody (631-680 aa) (STJ92949)

GENERAL INFORMATION

Product Type	Primary antibodies
Applications	IHC/IF/ELISA
Host / Source	Rabbit
Reactivity	Human/Mouse

PRODUCT PROPERTIES

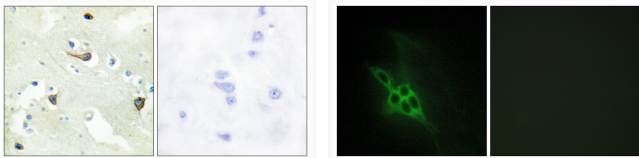
Clonality	Polyclonal
Concentration	1 mg/mL
Conjugation	Unconjugated
Purification	The antibody was affinity-purified from rabbit antiserum by affinity-chromatography using epitope-specific immunogen.
Dilution Range	IHC 1:100-1:300 IF 1:200-1:1000 ELISA 1:20000
Formulation	Liquid in PBS containing 50% Glycerol, 0.5% BSA and 0.02% Sodium Azide.
Isotype	IgG
Molecular Weight	Calculated: 110kD
Storage Instruction	Store at -20°C for up to 1 year from the date of receipt, and avoid repeat freeze-thaw cycles.

TARGET INFORMATION

Gene ID	2049 2048 2047 EPHB3 EPHB2 EPHB3_HUMAN EPHB2_HUMAN EPHB1_HUMAN
Immunogen Region	631-680 aa
Specificity	EphB1/2/3 Polyclonal Antibody detects endogenous levels of EphB1/2/3 protein.

ADDITIONAL INFORMATION

Note STRICTLY FOR FURTHER SCIENTIFIC RESEARCH USE ONLY (RUO). MUST NOT TO BE USED IN DIAGNOSTIC OR THERAPEUTIC APPLICATIONS.



Immunohistochemistry analysis of paraffin-embedded human brain tissue, using EphB1/2/3 Antibody. The picture on the right is blocked with the synthesized peptide.

Immunofluorescence analysis of NIH/3T3 cells, using EphB1/2/3 Antibody. The picture on the right is blocked with the synthesized peptide.