

Anti-EphB1/2 antibody (561-610 aa) (STJ92948)

GENERAL INFORMATION

Product Type	Primary antibodies
Applications	WB/IHC/IF/ELISA
Host / Source	Rabbit
Reactivity	Human/Mouse/Rat

PRODUCT PROPERTIES

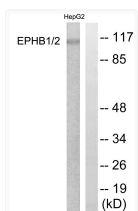
Clonality	Polyclonal
Concentration	1 mg/mL
Conjugation	Unconjugated
Purification	The antibody was affinity-purified from rabbit antiserum by affinity-chromatography using epitope-specific immunogen.
Dilution Range	WB 1:500-1:2000 IHC 1:100-1:300 IF 1:200-1:1000 ELISA 1:40000
Formulation	Liquid in PBS containing 50% Glycerol, 0.5% BSA and 0.02% Sodium Azide.
Isotype	IgG
Molecular Weight	Observed: 110kD
Storage Instruction	Store at -20°C for up to 1 year from the date of receipt, and avoid repeat freeze-thaw cycles.

TARGET INFORMATION

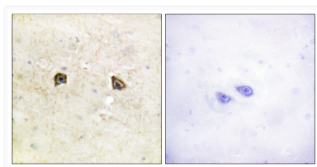
Gene ID	2048 2047
Gene Symbol	EPHB2 EPHB1
UniProt ID	EPHB2_HUMAN EPHB1_HUMAN
Immunogen Region	561-610 aa
Specificity	EphB1/2 Polyclonal Antibody detects endogenous levels of EphB1/2 protein.

ADDITIONAL INFORMATION

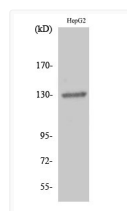
Note STRICTLY FOR FURTHER SCIENTIFIC RESEARCH USE ONLY (RUO). MUST NOT TO BE USED IN DIAGNOSTIC OR THERAPEUTIC APPLICATIONS.



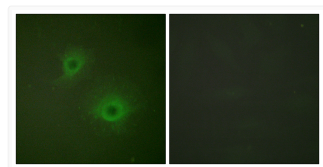
Western blot analysis of lysates from HepG2 cells, using EPHB1/2 Antibody. The lane on the right is blocked with the synthesized peptide.



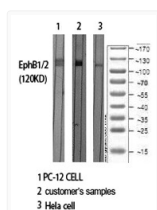
Immunohistochemistry analysis of paraffin-embedded human brain tissue, using EPHB1/2 Antibody. The picture on the right is blocked with the synthesized peptide.



Western blot analysis of HepG2 cells using EphB1/2 Polyclonal Antibody diluted at 1 : 500



Immunofluorescence analysis of HUVEC cells, using EPHB1/2 Antibody. The picture on the right is blocked with the synthesized peptide.



Western blot analysis of various cells using EphB1/2 Polyclonal Antibody diluted at 1 : 500