

Anti-EphA2/3/4 antibody (556-605 aa) (STJ92941)

GENERAL INFORMATION

Product Type	Primary antibodies
Applications	WB/IF/ELISA
Host / Source	Rabbit
Reactivity	Human/Rat

PRODUCT PROPERTIES

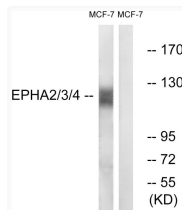
Clonality	Polyclonal
Concentration	1 mg/mL
Conjugation	Unconjugated
Purification	The antibody was affinity-purified from rabbit antiserum by affinity-chromatography using epitope-specific immunogen.
Dilution Range	WB 1:500-1:2000 IF 1:200-1:1000 ELISA 1:40000
Formulation	Liquid in PBS containing 50% Glycerol, 0.5% BSA and 0.02% Sodium Azide.
Isotype	IgG
Molecular Weight	Observed: 130kD
Storage Instruction	Store at -20°C for up to 1 year from the date of receipt, and avoid repeat freeze-thaw cycles.

TARGET INFORMATION

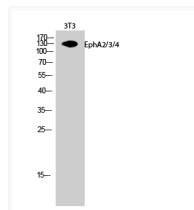
Gene ID	1969 2043 2042 EPHA2 EPHA4 EPHA2_HUMAN EPHA4_HUMAN EPHA3_HUMAN
Immunogen Region	556-605 aa
Specificity	EphA2/3/4 Polyclonal Antibody detects endogenous levels of EphA2/3/4 protein.

ADDITIONAL INFORMATION

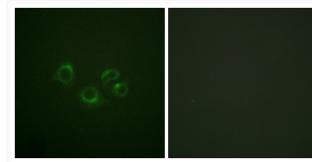
Note STRICTLY FOR FURTHER SCIENTIFIC RESEARCH USE ONLY (RUO). MUST NOT TO BE USED IN DIAGNOSTIC OR THERAPEUTIC APPLICATIONS.



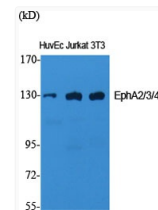
Western blot analysis of lysates from MCF-7 cells, using EPHA2/3/4 Antibody. The lane on the right is blocked with the synthesized peptide.



Western blot analysis of 3T3 cells using EphA2/3/4 Polyclonal Antibody



Immunofluorescence analysis of A549 cells, using EPHA2/3/4 Antibody. The picture on the right is blocked with the synthesized peptide.



Western blot analysis of various cells using EphA2/3/4 Polyclonal Antibody