

Anti-EPCAM antibody (116-165 aa) (STJ92937)

GENERAL INFORMATION

Product Type	Primary antibodies
Applications	WB/IF/ELISA
Host / Source	Rabbit
Reactivity	Human/Rat/Mouse

PRODUCT PROPERTIES

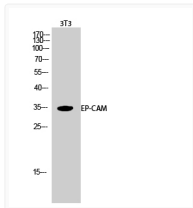
Clonality	Polyclonal
Concentration	1 mg/mL
Conjugation	Unconjugated
Purification	The antibody was affinity-purified from rabbit antiserum by affinity-chromatography using epitope-specific immunogen.
Dilution Range	WB 1:500-1:2000 IF 1:200-1:1000 ELISA 1:5000
Formulation	Liquid in PBS containing 50% Glycerol, 0.5% BSA and 0.02% Sodium Azide.
Isotype	IgG
Molecular Weight	Observed: 34kD
Storage Instruction	Store at -20°C for up to 1 year from the date of receipt, and avoid repeat freeze-thaw cycles.

TARGET INFORMATION

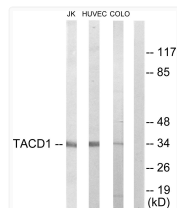
Gene ID	4072
Gene Symbol	EPCAM
UniProt ID	EPCAM_HUMAN
Immunogen Region	116-165 aa
Specificity	EP-CAM Polyclonal Antibody detects endogenous levels of EP-CAM protein.

ADDITIONAL INFORMATION

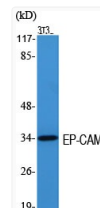
Note **STRICTLY FOR FURTHER SCIENTIFIC RESEARCH USE ONLY (RUO). MUST NOT TO BE USED IN DIAGNOSTIC OR THERAPEUTIC APPLICATIONS.**



Western blot analysis of 3T3 cells using EP-CAM Polyclonal Antibody diluted at 1: 2000



Western blot analysis of lysates from Jurkat, HUVEC, and COLO205 cells, using TACD1 Antibody. The lane on the right is blocked with the synthesized peptide.



Western blot analysis of various cells using EP-CAM Polyclonal Antibody diluted at 1: 2000