

Anti-MRC2 antibody (121-170 aa) (STJ92921)

GENERAL INFORMATION

Product Type	Primary antibodies
Applications	WB/IHC/IF/ELISA
Host / Source	Rabbit
Reactivity	Human/Mouse/Rat

PRODUCT PROPERTIES

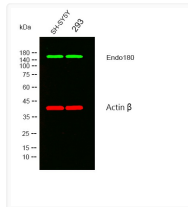
Clonality	Polyclonal
Concentration	1 mg/mL
Conjugation	Unconjugated
Purification	The antibody was affinity-purified from rabbit antiserum by affinity-chromatography using epitope-specific immunogen.
Dilution Range	WB 1:500-1:2000 IHC 1:100-1:300 IF 1:200-1:1000 ELISA 1:20000
Formulation	Liquid in PBS containing 50% Glycerol, 0.5% BSA and 0.02% Sodium Azide.
Isotype	IgG
Molecular Weight	Observed: 167kD
Storage Instruction	Store at -20°C for up to 1 year from the date of receipt, and avoid repeat freeze-thaw cycles.

TARGET INFORMATION

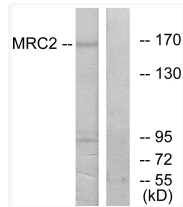
Gene ID	9902
Gene Symbol	MRC2
UniProt ID	MRC2_HUMAN
Immunogen Region	121-170 aa
Specificity	Endo180 Polyclonal Antibody detects endogenous levels of Endo180 protein.

ADDITIONAL INFORMATION

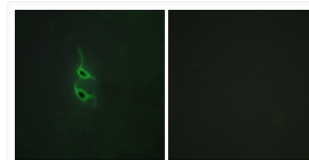
Note **STRICTLY FOR FURTHER SCIENTIFIC RESEARCH USE ONLY (RUO). MUST NOT TO BE USED IN DIAGNOSTIC OR THERAPEUTIC APPLICATIONS.**



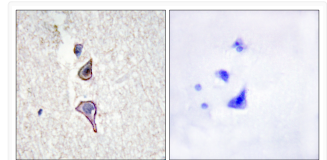
Western blot analysis of lysates from SH-SY5Y, 293 cells, (Green) primary antibody was diluted at 1:1000, 4°C over night, secondary antibody was diluted at 1:10000, 37°C 1hour. (Red) loading control antibody was diluted at 1:5000 as loading control, 4°C over night, secondary antibody was diluted at 1:10000, 37°C 1hour.



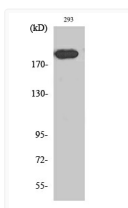
Western blot analysis of lysates from 293 cells, using MRC2 Antibody. The lane on the right is blocked with the synthesized peptide.



Immunofluorescence analysis of HepG2 cells, using MRC2 Antibody. The picture on the right is blocked with the synthesized peptide.



Immunohistochemistry analysis of paraffin-embedded human brain tissue, using MRC2 Antibody. The picture on the right is blocked with the synthesized peptide.



Western blot analysis of various cells using Endo180 Polyclonal Antibody diluted at 1 : 1000