

## Anti-BSG antibody (336-385 aa) (STJ92907)

### GENERAL INFORMATION

Product Type	Primary antibodies
Applications	WB/IHC/IF/ELISA
Host / Source	Rabbit
Reactivity	Human/Mouse/Rat

### PRODUCT PROPERTIES

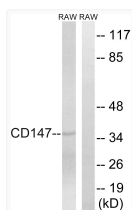
Clonality	Polyclonal
Concentration	1 mg/mL
Conjugation	Unconjugated
Purification	The antibody was affinity-purified from rabbit antiserum by affinity-chromatography using epitope-specific immunogen.
Dilution Range	WB 1:500-1:2000 IHC 1:100-1:300 ELISA 1:10000 IF 1:50-200
Formulation	Liquid in PBS containing 50% Glycerol, 0.5% BSA and 0.02% Sodium Azide.
Isotype	IgG
Molecular Weight	Observed: 50kD
Storage Instruction	Store at -20°C for up to 1 year from the date of receipt, and avoid repeat freeze-thaw cycles.

### TARGET INFORMATION

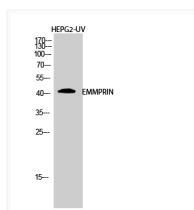
Gene ID	<a href="#">682</a>
Gene Symbol	<a href="#">BSG</a>
UniProt ID	<a href="#">BASI_HUMAN</a>
Immunogen Region	336-385 aa
Specificity	EMMPRIN Polyclonal Antibody detects endogenous levels of EMMPRIN protein.

### ADDITIONAL INFORMATION

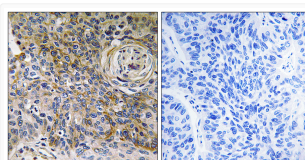
Note STRICTLY FOR FURTHER SCIENTIFIC RESEARCH USE ONLY (RUO). MUST NOT TO BE USED IN DIAGNOSTIC OR THERAPEUTIC APPLICATIONS.



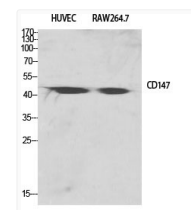
Western blot analysis of lysates from RAW264.7 cells, using CD147 Antibody. The lane on the right is blocked with the synthesized peptide.



Western blot analysis of HEPG2-UV cells using EMMPRIN Polyclonal Antibody diluted at 1: 2000



Immunohistochemistry analysis of paraffin-embedded human breast carcinoma tissue, using CD147 Antibody. The picture on the right is blocked with the synthesized peptide.



Western blot analysis of various cells using EMMPRIN Polyclonal Antibody diluted at 1: 2000