

## Anti-ELOVL6 antibody (21-70 aa) (STJ92905)

### GENERAL INFORMATION

Product Type	Primary antibodies
Applications	WB/ELISA
Host / Source	Rabbit
Reactivity	Human/Mouse/Rat

### PRODUCT PROPERTIES

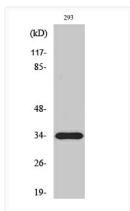
Clonality	Polyclonal
Concentration	1 mg/mL
Conjugation	Unconjugated
Purification	The antibody was affinity-purified from rabbit antiserum by affinity-chromatography using epitope-specific immunogen.
Dilution Range	WB 1:500-1:2000 ELISA 1:10000
Formulation	Liquid in PBS containing 50% Glycerol, 0.5% BSA and 0.02% Sodium Azide.
Isotype	IgG
Molecular Weight	Observed: 35kD
Storage Instruction	Store at -20°C for up to 1 year from the date of receipt, and avoid repeat freeze-thaw cycles.

### TARGET INFORMATION

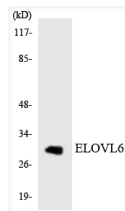
Gene ID	<a href="#">79071</a>
Gene Symbol	<a href="#">ELOVL6</a>
UniProt ID	<a href="#">ELOV6_HUMAN</a>
Immunogen Region	21-70 aa
Specificity	ELOVL6 Polyclonal Antibody detects endogenous levels of ELOVL6 protein.

### ADDITIONAL INFORMATION

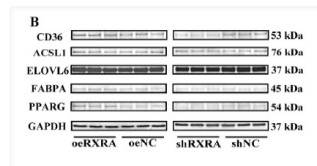
Note **STRICTLY FOR FURTHER SCIENTIFIC RESEARCH USE ONLY (RUO). MUST NOT TO BE USED IN DIAGNOSTIC OR THERAPEUTIC APPLICATIONS.**



Western Blot analysis of various cells using ELOVL6 Polyclonal Antibody STJ92905



Western blot analysis of the lysates from K562 cells using ELOVL6 antibody, STJ92905



Western Blot (WB): A Novel Study in Duck Myoblasts: The Transcription Factor Retinoid X Receptor Alpha (RXRA) Inhibits STJ92905