

## Anti-ELOVL4 antibody (41-90 aa) (STJ92903)

### GENERAL INFORMATION

Product Type	Primary antibodies
Applications	WB/ELISA
Host / Source	Rabbit
Reactivity	Human/Mouse

### PRODUCT PROPERTIES

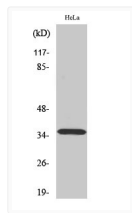
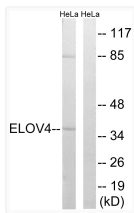
Clonality	Polyclonal
Concentration	1 mg/mL
Conjugation	Unconjugated
Purification	The antibody was affinity-purified from rabbit antiserum by affinity-chromatography using epitope-specific immunogen.
Dilution Range	WB 1:500-1:2000 ELISA 1:40000
Formulation	Liquid in PBS containing 50% Glycerol, 0.5% BSA and 0.02% Sodium Azide.
Isotype	IgG
Molecular Weight	Observed: 37kD
Storage Instruction	Store at -20°C for up to 1 year from the date of receipt, and avoid repeat freeze-thaw cycles.

### TARGET INFORMATION

Gene ID	<a href="#">6785</a>
Gene Symbol	<a href="#">ELOVL4</a>
UniProt ID	<a href="#">ELOV4_HUMAN</a>
Immunogen Region	41-90 aa
Specificity	ELOVL4 Polyclonal Antibody detects endogenous levels of ELOVL4 protein.

### ADDITIONAL INFORMATION

Note **STRICTLY FOR FURTHER SCIENTIFIC RESEARCH USE ONLY (RUO). MUST NOT TO BE USED IN DIAGNOSTIC OR THERAPEUTIC APPLICATIONS.**



Western blot analysis of lysates from HeLa cells, Western blot analysis of various cells using ELOVL4 Antibody. The lane on the right is ELOVL4 Polyclonal Antibody diluted at 1:1000 blocked with the synthesized peptide.