

## Anti-Egr-2 antibody (371-420 aa) (STJ92863)

### GENERAL INFORMATION

Product Type	Primary antibodies
Applications	WB/IHC/IF/ELISA
Host / Source	Rabbit
Reactivity	Human/Mouse/Rat

### PRODUCT PROPERTIES

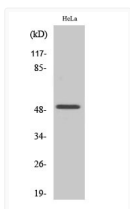
Clonality	Polyclonal
Concentration	1 mg/mL
Conjugation	Unconjugated
Purification	The antibody was affinity-purified from rabbit antiserum by affinity-chromatography using epitope-specific immunogen.
Dilution Range	WB 1:500-1:2000 IHC 1:100-1:300 IF 1:200-1:1000 ELISA 1:20000
Formulation	Liquid in PBS containing 50% Glycerol, 0.5% BSA and 0.02% Sodium Azide.
Isotype	IgG
Molecular Weight	Observed: 50kD
Storage Instruction	Store at -20°C for up to 1 year from the date of receipt, and avoid repeat freeze-thaw cycles.

### TARGET INFORMATION

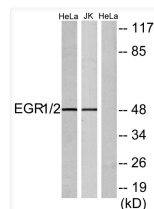
Gene ID	<a href="#">1958</a> <a href="#">1959</a>
Gene Symbol	<a href="#">EGR1</a> <a href="#">EGR2</a>
UniProt ID	<a href="#">EGR1_HUMAN</a> <a href="#">EGR2_HUMAN</a>
Immunogen Region	371-420 aa
Specificity	Egr-2 Polyclonal Antibody detects endogenous levels of Egr-2 protein.

### ADDITIONAL INFORMATION

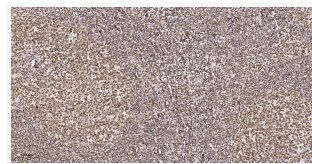
Note **STRICTLY FOR FURTHER SCIENTIFIC RESEARCH USE ONLY (RUO). MUST NOT TO BE USED IN DIAGNOSTIC OR THERAPEUTIC APPLICATIONS.**



Western blot analysis of various cells using Egr-2 polyclonal antibody on cells' nuclei extracted by Minute™. STJ92863



Western blot analysis of lysates from HeLa and Jurkat cells, using EGR1/2 Antibody. The lane on the right is blocked. STJ92863



Immunohistochemical analysis of paraffin-embedded human tonsil. 1, Tris-EDTA, pH 9.0 was used for antigen retrieval. 2, STJ92863