

## Anti-E2F2 antibody (221-270 aa) (STJ92808)

### GENERAL INFORMATION

Product Type	Primary antibodies
Applications	WB/IHC/IF/ELISA
Host / Source	Rabbit
Reactivity	Human/Mouse

### PRODUCT PROPERTIES

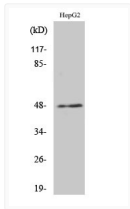
Clonality	Polyclonal
Concentration	1 mg/mL
Conjugation	Unconjugated
Purification	The antibody was affinity-purified from rabbit antiserum by affinity-chromatography using epitope-specific immunogen.
Dilution Range	WB 1:500-1:2000 IHC 1:100-1:300 ELISA 1:40000 IF 1:50-200
Formulation	Liquid in PBS containing 50% Glycerol, 0.5% BSA and 0.02% Sodium Azide.
Isotype	IgG
Molecular Weight	Observed: 48kD
Storage Instruction	Store at -20°C for up to 1 year from the date of receipt, and avoid repeat freeze-thaw cycles.

### TARGET INFORMATION

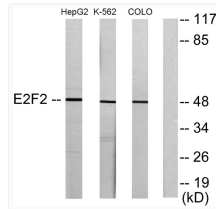
Gene ID	<a href="#">1870</a>
Gene Symbol	<a href="#">E2F2</a>
UniProt ID	<a href="#">E2F2_HUMAN</a>
Immunogen Region	221-270 aa
Specificity	E2F-2 Polyclonal Antibody detects endogenous levels of E2F-2 protein.

### ADDITIONAL INFORMATION

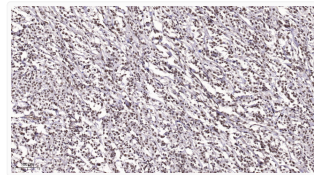
Note **STRICTLY FOR FURTHER SCIENTIFIC RESEARCH USE ONLY (RUO). MUST NOT TO BE USED IN DIAGNOSTIC OR THERAPEUTIC APPLICATIONS.**



Western Blot analysis of various cells using E2F-2 Polyclonal Antibody with cells nucleus extracted by Minute™ STJ92808



Western blot analysis of lysates from HepG2, K562, and COLO205 cells, using E2F2 Antibody. The lane on the right is STJ92808



Immunohistochemical analysis of paraffin-embedded human small intestinal stromal tumor. 1, Tris-EDTA, pH 9.0 was used STJ92808