

Anti-RCAN1 antibody (201-250 aa) (STJ92781)

GENERAL INFORMATION

Product Type	Primary antibodies
Applications	WB/ELISA
Host / Source	Rabbit
Reactivity	Human/Mouse/Rat

PRODUCT PROPERTIES

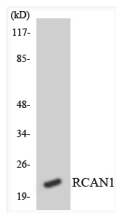
Clonality	Polyclonal
Concentration	1 mg/mL
Conjugation	Unconjugated
Purification	The antibody was affinity-purified from rabbit antiserum by affinity-chromatography using epitope-specific immunogen.
Dilution Range	WB 1:500-1:2000 ELISA 1:10000
Formulation	Liquid in PBS containing 50% Glycerol, 0.5% BSA and 0.02% Sodium Azide.
Isotype	IgG
Molecular Weight	Observed: 22kD
Storage Instruction	Store at -20°C for up to 1 year from the date of receipt, and avoid repeat freeze-thaw cycles.

TARGET INFORMATION

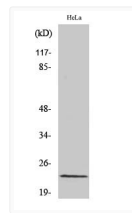
Gene ID	1827
Gene Symbol	RCAN1
UniProt ID	RCAN1_HUMAN
Immunogen Region	201-250 aa
Specificity	DSCR 1 Polyclonal Antibody detects endogenous levels of DSCR 1 protein.

ADDITIONAL INFORMATION

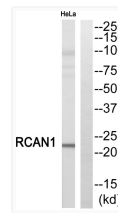
Note **STRICTLY FOR FURTHER SCIENTIFIC RESEARCH USE ONLY (RUO). MUST NOT TO BE USED IN DIAGNOSTIC OR THERAPEUTIC APPLICATIONS.**



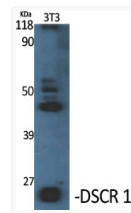
Western blot analysis of the lysates from HT-29 cells using RCAN1 antibody.



Western blot analysis of HeLa cells using DSCR 1 Polyclonal Antibody diluted at 1 : 1000



Western blot analysis of RCAN1 Antibody. The lane on the right is blocked with the RCAN1 peptide.



Western blot analysis of various cells using DSCR 1 Polyclonal Antibody diluted at 1 : 1000