

## Anti-TFDP2 antibody (64-113 aa) (STJ92772)

### GENERAL INFORMATION

Product Type	Primary antibodies
Applications	WB/ELISA
Host / Source	Rabbit
Reactivity	Human/Mouse/Rat/Monkey

### PRODUCT PROPERTIES

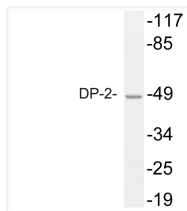
Clonality	Polyclonal
Concentration	1 mg/mL
Conjugation	Unconjugated
Purification	The antibody was affinity-purified from rabbit antiserum by affinity-chromatography using epitope-specific immunogen.
Dilution Range	WB 1:500-1:2000 ELISA 1:10000
Formulation	Liquid in PBS containing 50% Glycerol, 0.5% BSA and 0.02% Sodium Azide.
Isotype	IgG
Molecular Weight	Observed: 49kD
Storage Instruction	Store at -20°C for up to 1 year from the date of receipt, and avoid repeat freeze-thaw cycles.

### TARGET INFORMATION

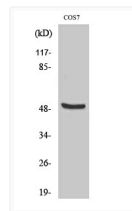
Gene ID	<a href="#">7029</a>
Gene Symbol	<a href="#">TFDP2</a>
UniProt ID	<a href="#">TFDP2_HUMAN</a>
Immunogen Region	64-113 aa
Specificity	DP-2 Polyclonal Antibody detects endogenous levels of DP-2 protein.

### ADDITIONAL INFORMATION

Note **STRICTLY FOR FURTHER SCIENTIFIC RESEARCH USE ONLY (RUO). MUST NOT TO BE USED IN DIAGNOSTIC OR THERAPEUTIC APPLICATIONS.**



Western blot analysis of lysate from COS7 cells, using DP-2 antibody.



Western blot analysis of various cells using DP-2 Polyclonal Antibody cells nucleus extracted by Minute TM Cytoplasmic and Nuclear Fractionation kit (SC-003, Inventibiotech, MN, USA).