

Anti-POLB antibody (286-335 aa) (STJ92734)

GENERAL INFORMATION

Product Type	Primary antibodies
Applications	WB/IHC/IF/ELISA
Host / Source	Rabbit
Reactivity	Human/Mouse/Rat

PRODUCT PROPERTIES

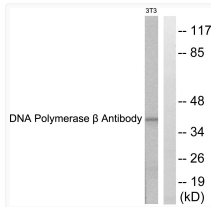
Clonality	Polyclonal
Concentration	1 mg/mL
Conjugation	Unconjugated
Purification	The antibody was affinity-purified from rabbit antiserum by affinity-chromatography using epitope-specific immunogen.
Dilution Range	WB 1:500-1:2000 IHC 1:100-1:300 ELISA 1:10000 IF 1:50-200
Formulation	Liquid in PBS containing 50% Glycerol, 0.5% BSA and 0.02% Sodium Azide.
Isotype	IgG
Molecular Weight	Observed: 38kD
Storage Instruction	Store at -20°C for up to 1 year from the date of receipt, and avoid repeat freeze-thaw cycles.

TARGET INFORMATION

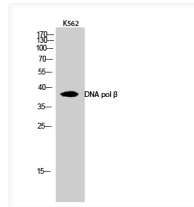
Gene ID	5423
Gene Symbol	POLB
UniProt ID	DPOLB_HUMAN
Immunogen Region	286-335 aa
Specificity	DNA pol Beta Polyclonal Antibody detects endogenous levels of DNA pol Beta protein.

ADDITIONAL INFORMATION

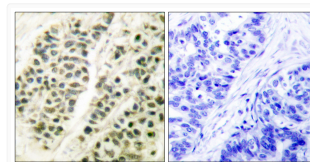
Note STRICTLY FOR FURTHER SCIENTIFIC RESEARCH USE ONLY (RUO). MUST NOT TO BE USED IN DIAGNOSTIC OR THERAPEUTIC APPLICATIONS.



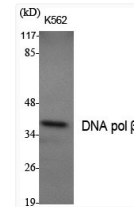
Western blot analysis of lysates from NIH/3T3 cells, using DNA Polymerase beta Antibody. The lane on the right is blocked with the synthesized peptide.



Western blot analysis of K562 cells using DNA pol Beta Polyclonal Antibody



Immunohistochemistry analysis of paraffin-embedded human breast carcinoma tissue, using DNA Polymerase beta Antibody. The picture on the right is blocked with the synthesized peptide.



Western blot analysis of various cells using DNA pol Beta Polyclonal Antibody