

Anti-DDX52 antibody (550-599 aa) (STJ92680)

GENERAL INFORMATION

Product Type	Primary antibodies
Applications	WB/IHC/IF/ELISA
Host / Source	Rabbit
Reactivity	Human/Rat/Mouse

PRODUCT PROPERTIES

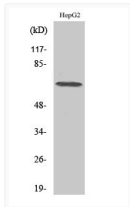
Clonality	Polyclonal
Concentration	1 mg/mL
Conjugation	Unconjugated
Purification	The antibody was affinity-purified from rabbit antiserum by affinity-chromatography using epitope-specific immunogen.
Dilution Range	WB 1:500-1:2000 IHC 1:100-1:300 ELISA 1:40000 IF 1:50-200
Formulation	Liquid in PBS containing 50% Glycerol, 0.5% BSA and 0.02% Sodium Azide.
Isotype	IgG
Molecular Weight	Observed: 67kD
Storage Instruction	Store at -20°C for up to 1 year from the date of receipt, and avoid repeat freeze-thaw cycles.

TARGET INFORMATION

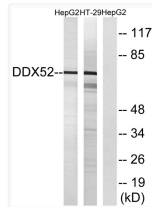
Gene ID	11056
Gene Symbol	DDX52
UniProt ID	DDX52_HUMAN
Immunogen Region	550-599 aa
Specificity	DDX52 Polyclonal Antibody detects endogenous levels of DDX52 protein.

ADDITIONAL INFORMATION

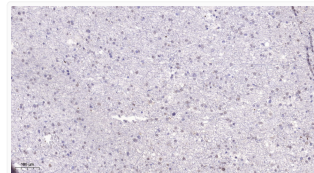
Note STRICTLY FOR FURTHER SCIENTIFIC RESEARCH USE ONLY (RUO). MUST NOT TO BE USED IN DIAGNOSTIC OR THERAPEUTIC APPLICATIONS.



Western blot analysis of various cells using DDX52 polyclonal antibody diluted at 1:500, cells nucleus extracted by STJ92680



Western blot analysis of lysates from HepG2 and HT-29 cells, using DDX52 Antibody. The lane on the right was blocked STJ92680



Immunohistochemical analysis of paraffin-embedded human brain. 1, Tris-EDTA, pH 9.0 was used for antigen retrieval. 2, STJ92680