

Anti-DDX3 antibody (14-63 aa) (STJ92677)

GENERAL INFORMATION

Product Type	Primary antibodies
Applications	WB/ELISA
Host / Source	Rabbit
Reactivity	Human/Mouse

PRODUCT PROPERTIES

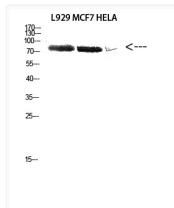
Clonality	Polyclonal
Concentration	1 mg/mL
Conjugation	Unconjugated
Purification	The antibody was affinity-purified from rabbit antiserum by affinity-chromatography using epitope-specific immunogen.
Dilution Range	WB 1:500-1:2000 ELISA 1:10000
Formulation	Liquid in PBS containing 50% Glycerol, 0.5% BSA and 0.02% Sodium Azide.
Isotype	IgG
Molecular Weight	Observed: 73kD
Storage Instruction	Store at -20°C for up to 1 year from the date of receipt, and avoid repeat freeze-thaw cycles.

TARGET INFORMATION

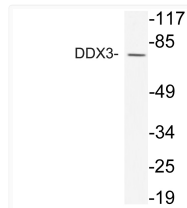
Gene ID	1654 8653
Gene Symbol	DDX3X DDX3Y
UniProt ID	DDX3X_HUMAN DDX3Y_HUMAN
Immunogen Region	14-63 aa
Specificity	DDX3 Polyclonal Antibody detects endogenous levels of DDX3 protein.

ADDITIONAL INFORMATION

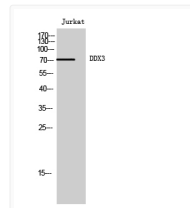
Note STRICTLY FOR FURTHER SCIENTIFIC RESEARCH USE ONLY (RUO). MUST NOT TO BE USED IN DIAGNOSTIC OR THERAPEUTIC APPLICATIONS.



Western blot analysis of L929 MCF7 HELA cells using Antibody diluted at 2000. Secondary antibody was diluted at 1:20000



Western blot analysis of lysate from Jurkat cells, using DDX3 antibody.



Western blot analysis of Jurkat cells using DDX3 Polyclonal Antibody diluted at 1: 2000