

Anti-KRT7 antibody (420-469 aa) (STJ92637)

GENERAL INFORMATION

Product Type	Primary antibodies
Applications	WB/IHC/IF/ELISA
Host / Source	Rabbit
Reactivity	Human/Rat/Mouse

PRODUCT PROPERTIES

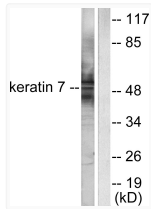
Clonality	Polyclonal
Concentration	1 mg/mL
Conjugation	Unconjugated
Purification	The antibody was affinity-purified from rabbit antiserum by affinity-chromatography using epitope-specific immunogen.
Dilution Range	WB 1:500-1:2000 IHC 1:100-1:300 IF 1:200-1:1000 ELISA 1:40000
Formulation	Liquid in PBS containing 50% Glycerol, 0.5% BSA and 0.02% Sodium Azide.
Isotype	IgG
Molecular Weight	Observed: 51kD
Storage Instruction	Store at -20°C for up to 1 year from the date of receipt, and avoid repeat freeze-thaw cycles.

TARGET INFORMATION

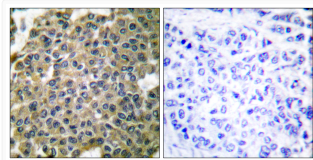
Gene ID	3855
Gene Symbol	KRT7
UniProt ID	K2C7_HUMAN
Immunogen Region	420-469 aa
Specificity	Cytokeratin 7 Polyclonal Antibody detects endogenous levels of Cytokeratin 7 protein.

ADDITIONAL INFORMATION

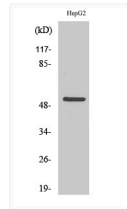
Note STRICTLY FOR FURTHER SCIENTIFIC RESEARCH USE ONLY (RUO). MUST NOT TO BE USED IN DIAGNOSTIC OR THERAPEUTIC APPLICATIONS.



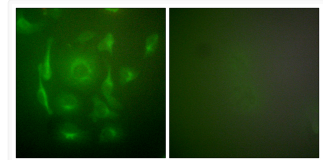
Western blot analysis of lysates from HepG2 cells, using Keratin 7 Antibody. The lane on the right is blocked with the synthesized peptide.



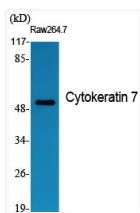
Immunohistochemistry analysis of paraffin-embedded human breast carcinoma tissue, using Keratin 7 Antibody. The picture on the right is blocked with the synthesized peptide.



Western blot analysis of HepG2 cells using Cytokeratin 7 Polyclonal Antibody diluted at 1:1000



Immunofluorescence analysis of HepG2 cells, using Keratin 7 Antibody. The picture on the right is blocked with the synthesized peptide.



Western blot analysis of various cells using Cytokeratin 7 Polyclonal Antibody diluted at 1:1000