

Anti-KRT5 antibody (541-590 aa) (STJ92636)

GENERAL INFORMATION

Product Type	Primary antibodies
Applications	WB/IHC/IF/ELISA
Host / Source	Rabbit
Reactivity	Human/Mouse/Rat

PRODUCT PROPERTIES

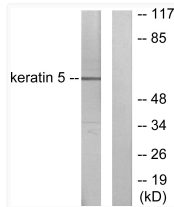
Clonality	Polyclonal
Concentration	1 mg/mL
Conjugation	Unconjugated
Purification	The antibody was affinity-purified from rabbit antiserum by affinity-chromatography using epitope-specific immunogen.
Dilution Range	WB 1:500-1:2000 IHC 1:100-1:300 IF 1:200-1:1000 ELISA 1:10000
Formulation	Liquid in PBS containing 50% Glycerol, 0.5% BSA and 0.02% Sodium Azide.
Isotype	IgG
Molecular Weight	Observed: 62kD
Storage Instruction	Store at -20°C for up to 1 year from the date of receipt, and avoid repeat freeze-thaw cycles.

TARGET INFORMATION

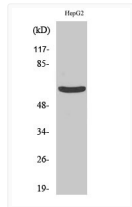
Gene ID	3852
Gene Symbol	KRT5
UniProt ID	K2C5_HUMAN
Immunogen Region	541-590 aa
Specificity	Cytokeratin 5 Polyclonal Antibody detects endogenous levels of Cytokeratin 5 protein.

ADDITIONAL INFORMATION

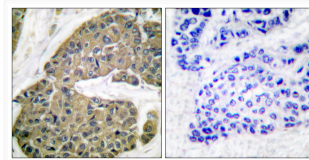
Note STRICTLY FOR FURTHER SCIENTIFIC RESEARCH USE ONLY (RUO). MUST NOT TO BE USED IN DIAGNOSTIC OR THERAPEUTIC APPLICATIONS.



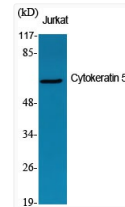
Western blot analysis of lysates from HepG2 cells, using Keratin 5 Antibody. The lane on the right is blocked with the synthesized peptide.



Western blot analysis of HepG2 cells using Cytokeratin 5 Polyclonal Antibody diluted at 1:1000.



Immunohistochemistry analysis of paraffin-embedded human breast carcinoma tissue, using Keratin 5 Antibody. The picture on the right is blocked with the synthesized peptide.



Western blot analysis of various cells using Cytokeratin 5 Polyclonal Antibody diluted at 1:1000.