

Anti-Cytokeratin 14/16 antibody (1-50 aa) (STJ92627)

GENERAL INFORMATION

Product Type	Primary antibodies
Applications	WB/IHC/IF/ELISA
Host / Source	Rabbit
Reactivity	Human/Mouse/Rat

PRODUCT PROPERTIES

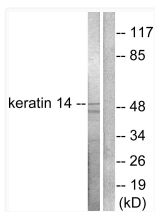
Clonality	Polyclonal
Concentration	1 mg/mL
Conjugation	Unconjugated
Purification	The antibody was affinity-purified from rabbit antiserum by affinity-chromatography using epitope-specific immunogen.
Dilution Range	WB 1:500-1:2000 IHC 1:100-1:300 IF 1:200-1:1000 ELISA 1:20000
Formulation	Liquid in PBS containing 50% Glycerol, 0.5% BSA and 0.02% Sodium Azide.
Isotype	IgG
Molecular Weight	Observed: 52kD
Storage Instruction	Store at -20°C for up to 1 year from the date of receipt, and avoid repeat freeze-thaw cycles.

TARGET INFORMATION

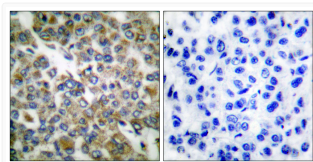
Gene ID	3861 3868
Gene Symbol	KRT14 KRT16
UniProt ID	K1C14_HUMAN K1C16_HUMAN
Immunogen Region	1-50 aa
Specificity	Cytokeratin 14/16 Polyclonal Antibody detects endogenous levels of Cytokeratin 14/16 protein.

ADDITIONAL INFORMATION

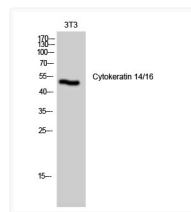
Note **STRICTLY FOR FURTHER SCIENTIFIC RESEARCH USE ONLY (RUO). MUST NOT TO BE USED IN DIAGNOSTIC OR THERAPEUTIC APPLICATIONS.**



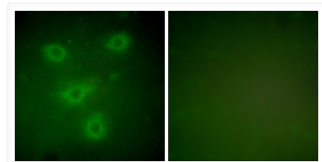
Western blot analysis of lysates from NIH/3T3 cells, using Keratin 14 Antibody. The lane on the right is blocked with the synthesized peptide.



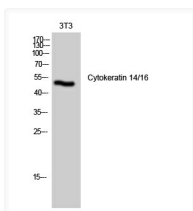
Immunohistochemistry analysis of paraffin-embedded human breast carcinoma tissue, using Keratin 14 Antibody. The picture on the right is blocked with the synthesized peptide.



Western blot analysis of NIH-3T3 cells using Cytokeratin 14/16 Polyclonal Antibody diluted at 1: 1000



Immunofluorescence analysis of NIH/3T3 cells, using Keratin 14 Antibody. The picture on the right is blocked with the synthesized peptide.



Western blot analysis of 3T3 cells using Cytokeratin 14/16 Polyclonal Antibody diluted at 1: 1000