

Anti-KRT13 antibody (233-282 aa) (STJ92625)

GENERAL INFORMATION

Product Type	Primary antibodies
Applications	WB/IHC/IF/ELISA
Host / Source	Rabbit
Reactivity	Human/Mouse/Rat

PRODUCT PROPERTIES

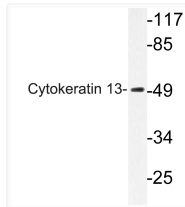
Clonality	Polyclonal
Concentration	1 mg/mL
Conjugation	Unconjugated
Purification	The antibody was affinity-purified from rabbit antiserum by affinity-chromatography using epitope-specific immunogen.
Dilution Range	WB 1:500-1:2000 IHC 1:100-1:300 ELISA 1:5000 IF 1:50-200
Formulation	Liquid in PBS containing 50% Glycerol, 0.5% BSA and 0.02% Sodium Azide.
Isotype	IgG
Molecular Weight	Observed: 52kD
Storage Instruction	Store at -20°C for up to 1 year from the date of receipt, and avoid repeat freeze-thaw cycles.

TARGET INFORMATION

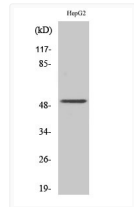
Gene ID	3860
Gene Symbol	KRT13
UniProt ID	K1C13_HUMAN
Immunogen Region	233-282 aa
Specificity	Cytokeratin 13 Polyclonal Antibody detects endogenous levels of Cytokeratin 13 protein.

ADDITIONAL INFORMATION

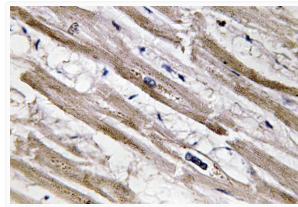
Note STRICTLY FOR FURTHER SCIENTIFIC RESEARCH USE ONLY (RUO). MUST NOT TO BE USED IN DIAGNOSTIC OR THERAPEUTIC APPLICATIONS.



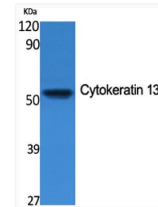
Western blot analysis of lysate from HepG2 cells, using Cytokeratin 13 antibody.



Western blot analysis of HepG2 cells using Cytokeratin 13 Polyclonal Antibody



Immunohistochemistry analysis of Cytokeratin 13 antibody in paraffin-embedded human heart tissue.



Western blot analysis of various cells using Cytokeratin 13 Polyclonal Antibody