

Anti-CSTA antibody (49-98 aa) (STJ92614)

GENERAL INFORMATION

| | |
|---------------|--------------------|
| Product Type | Primary antibodies |
| Applications | WB/IHC/IF/ELISA |
| Host / Source | Rabbit |
| Reactivity | Human/Rat/Mouse |

PRODUCT PROPERTIES

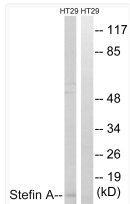
| | |
|---------------------|---|
| Clonality | Polyclonal |
| Concentration | 1 mg/mL |
| Conjugation | Unconjugated |
| Purification | The antibody was affinity-purified from rabbit antiserum by affinity-chromatography using epitope-specific immunogen. |
| Dilution Range | WB 1:500-1:2000 IHC 1:100-1:300 IF 1:200-1:1000 ELISA 1:5000 |
| Formulation | Liquid in PBS containing 50% Glycerol, 0.5% BSA and 0.02% Sodium Azide. |
| Isotype | IgG |
| Molecular Weight | Observed: 11kD |
| Storage Instruction | Store at -20°C for up to 1 year from the date of receipt, and avoid repeat freeze-thaw cycles. |

TARGET INFORMATION

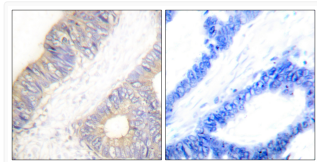
| | |
|------------------|---|
| Gene ID | 1475 |
| Gene Symbol | CSTA |
| UniProt ID | CYTA_HUMAN |
| Immunogen Region | 49-98 aa |
| Specificity | Cystatin A Polyclonal Antibody detects endogenous levels of Cystatin A protein. |

ADDITIONAL INFORMATION

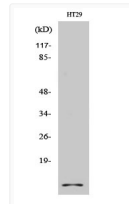
Note **STRICTLY FOR FURTHER SCIENTIFIC RESEARCH USE ONLY (RUO). MUST NOT TO BE USED IN DIAGNOSTIC OR THERAPEUTIC APPLICATIONS.**



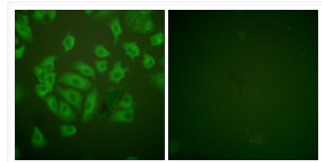
Western blot analysis of lysates from HT29 cells, using Stefin A Antibody. The lane on the right is blocked with the synthesized peptide.



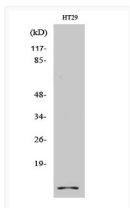
Immunohistochemistry analysis of paraffin-embedded human colon carcinoma tissue, using Stefin A Antibody. The picture on the right is blocked with the synthesized peptide.



Western blot analysis of HT29 cells using Cystatin A Polyclonal Antibody



Immunofluorescence analysis of A549 cells, using Stefin A Antibody. The picture on the right is blocked with the synthesized peptide.



Western blot analysis of various cells using Cystatin A Polyclonal Antibody