

## Anti-CYSLTR2 antibody (281-330 aa) (STJ92611)

### GENERAL INFORMATION

|               |                    |
|---------------|--------------------|
| Product Type  | Primary antibodies |
| Applications  | WB/IF/ELISA        |
| Host / Source | Rabbit             |
| Reactivity    | Human/Rat/Mouse    |

### PRODUCT PROPERTIES

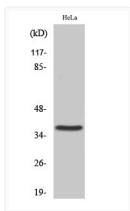
|                     |   |
|---------------------|---|
| Clonality           | Polyclonal  |
| Concentration       | 1 mg/mL   |
| Conjugation         | Unconjugated  |
| Purification        | The antibody was affinity-purified from rabbit antiserum by affinity-chromatography using epitope-specific immunogen. |
| Dilution Range      | WB 1:500-1:2000<br>IF 1:200-1:1000<br>ELISA 1:40000   |
| Formulation         | Liquid in PBS containing 50% Glycerol, 0.5% BSA and 0.02% Sodium Azide.   |
| Isotype             | IgG   |
| Molecular Weight    | Observed: 35kD  |
| Storage Instruction | Store at -20°C for up to 1 year from the date of receipt, and avoid repeat freeze-thaw cycles.                        |

### TARGET INFORMATION

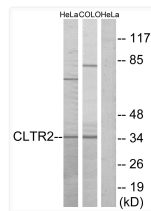
|                  |   |
|------------------|---|
| Gene ID          | <a href="#">57105</a>   |
| Gene Symbol      | <a href="#">CYSLTR2</a>   |
| UniProt ID       | <a href="#">CLTR2_HUMAN</a>   |
| Immunogen Region | 281-330 aa  |
| Specificity      | CysLTR2 Polyclonal Antibody detects endogenous levels of CysLTR2 protein. |

### ADDITIONAL INFORMATION

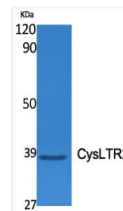
Note **STRICTLY FOR FURTHER SCIENTIFIC RESEARCH USE ONLY (RUO). MUST NOT TO BE USED IN DIAGNOSTIC OR THERAPEUTIC APPLICATIONS.**



Western blot analysis of HeLa cells using CysLTR2 Polyclonal Antibody



Western blot analysis of lysates from HeLa and COLO cells, using CLTR2 Antibody. The lane on the right is blocked with the synthesized peptide.



Western blot analysis of various cells using CysLTR2 Polyclonal Antibody