

Anti-CYSLTR1 antibody (131-180 aa) (STJ92609)

GENERAL INFORMATION

Product Type	Primary antibodies
Applications	WB/IHC/IF/ELISA
Host / Source	Rabbit
Reactivity	Human/Monkey

PRODUCT PROPERTIES

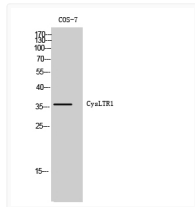
Clonality	Polyclonal
Concentration	1 mg/mL
Conjugation	Unconjugated
Purification	The antibody was affinity-purified from rabbit antiserum by affinity-chromatography using epitope-specific immunogen.
Dilution Range	WB 1:500-1:2000 IHC 1:100-1:300 IF 1:200-1:1000 ELISA 1:10000
Formulation	Liquid in PBS containing 50% Glycerol, 0.5% BSA and 0.02% Sodium Azide.
Isotype	IgG
Molecular Weight	Observed: 36kD
Storage Instruction	Store at -20°C for up to 1 year from the date of receipt, and avoid repeat freeze-thaw cycles.

TARGET INFORMATION

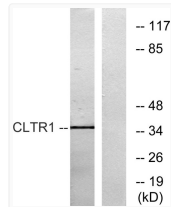
Gene ID	10800
Gene Symbol	CYSLTR1
UniProt ID	CLTR1_HUMAN
Immunogen Region	131-180 aa
Specificity	CysLTR1 Polyclonal Antibody detects endogenous levels of CysLTR1 protein.

ADDITIONAL INFORMATION

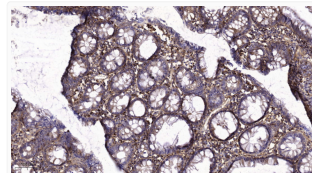
Note STRICTLY FOR FURTHER SCIENTIFIC RESEARCH USE ONLY (RUO). MUST NOT TO BE USED IN DIAGNOSTIC OR THERAPEUTIC APPLICATIONS.



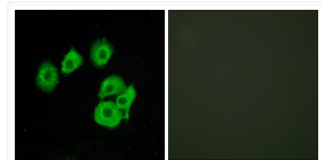
Western Blot analysis of COS-7 cells using CysLT1 Polyclonal Antibody STJ92609



Western blot analysis of lysates from COS7 cells, using CLTR1 Antibody. The lane on the right was blocked with the STJ92609



Immunohistochemical analysis of paraffin-embedded human colon cancer. 1, Tris-EDTA, pH 9.0 was used for antigen STJ92609



Immunofluorescence analysis of HUVEC cells using CLTR1 Antibody. The picture on the right is blocked with the STJ92609