

Anti-CYP8B1 antibody (371-420 aa) (STJ92607)

GENERAL INFORMATION

Product Type	Primary antibodies
Applications	WB/IHC/IF/ELISA
Host / Source	Rabbit
Reactivity	Human/Mouse

PRODUCT PROPERTIES

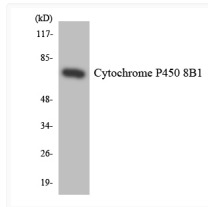
Clonality	Polyclonal
Concentration	1 mg/mL
Conjugation	Unconjugated
Purification	The antibody was affinity-purified from rabbit antiserum by affinity-chromatography using epitope-specific immunogen.
Dilution Range	WB 1:500-1:2000 IHC 1:100-1:300 ELISA 1:40000 IF 1:50-200
Formulation	Liquid in PBS containing 50% Glycerol, 0.5% BSA and 0.02% Sodium Azide.
Isotype	IgG
Molecular Weight	Observed: 58kD
Storage Instruction	Store at -20°C for up to 1 year from the date of receipt, and avoid repeat freeze-thaw cycles.

TARGET INFORMATION

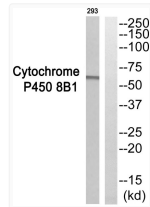
Gene ID	1582
Gene Symbol	CYP8B1
UniProt ID	CP8B1_HUMAN
Immunogen Region	371-420 aa
Specificity	CYP8B1 Polyclonal Antibody detects endogenous levels of CYP8B1 protein.

ADDITIONAL INFORMATION

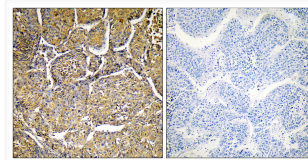
Note STRICTLY FOR FURTHER SCIENTIFIC RESEARCH USE ONLY (RUO). MUST NOT TO BE USED IN DIAGNOSTIC OR THERAPEUTIC APPLICATIONS.



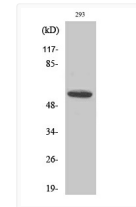
Western blot analysis of the lysates from HT-29 cells using Cytochrome P450 8B1 antibody.



Western blot analysis of Cytochrome P450 8B1 Antibody. The lane on the right is blocked with the Cytochrome P450 8B1 peptide.



Immunohistochemistry analysis of paraffin-embedded human liver, using Cytochrome P450 8B1 Antibody. The lane on the right is blocked with the Cytochrome P450 8B1 peptide.



Western blot analysis of various cells using CYP8B1 Polyclonal Antibody