

## Anti-CYP3A4 antibody (91-140 aa) (STJ92593)

### GENERAL INFORMATION

|               |                    |
|---------------|--------------------|
| Product Type  | Primary antibodies |
| Applications  | WB/IHC/IF/ELISA    |
| Host / Source | Rabbit             |
| Reactivity    | Human/Rat/Mouse    |

### PRODUCT PROPERTIES

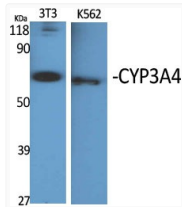
|                     |   |
|---------------------|---|
| Clonality           | Polyclonal  |
| Concentration       | 1 mg/mL   |
| Conjugation         | Unconjugated  |
| Purification        | The antibody was affinity-purified from rabbit antiserum by affinity-chromatography using epitope-specific immunogen. |
| Dilution Range      | WB 1:500-1:2000<br>IHC 1:100-1:300<br>ELISA 1:5000<br>IF 1:50-200   |
| Formulation         | Liquid in PBS containing 50% Glycerol, 0.5% BSA and 0.02% Sodium Azide.   |
| Isotype             | IgG   |
| Molecular Weight    | Observed: 57kD  |
| Storage Instruction | Store at -20°C for up to 1 year from the date of receipt, and avoid repeat freeze-thaw cycles.                        |

### TARGET INFORMATION

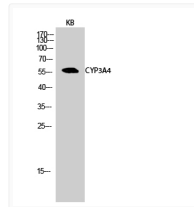
|                  |   |
|------------------|---|
| Gene ID          | <a href="#">1576</a>  |
| Gene Symbol      | <a href="#">CYP3A4</a>  |
| UniProt ID       | <a href="#">CP3A4_HUMAN</a>   |
| Immunogen Region | 91-140 aa   |
| Specificity      | CYP3A4 Polyclonal Antibody detects endogenous levels of CYP3A4 protein. |

### ADDITIONAL INFORMATION

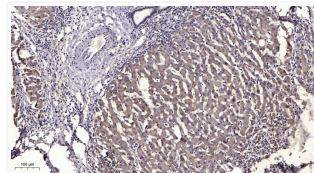
Note STRICTLY FOR FURTHER SCIENTIFIC RESEARCH USE ONLY (RUO). MUST NOT TO BE USED IN DIAGNOSTIC OR THERAPEUTIC APPLICATIONS.



Western blot analysis of various cells using CYP3A4 polyclonal antibody diluted at 1:1000 STJ92593



Western blot analysis of KB cells using CYP3A4 Polyclonal Antibody diluted at 1:1000 STJ92593



Immunohistochemical analysis of paraffin-embedded human liver cancer. 1, Antibody was diluted at 1:200 (4° overnight). STJ92593