

Anti-CYP2C19 antibody (241-290 aa) (STJ92575)

GENERAL INFORMATION

Product Type	Primary antibodies
Applications	WB/IHC/IF/ELISA
Host / Source	Rabbit
Reactivity	Human/Rat/Mouse

PRODUCT PROPERTIES

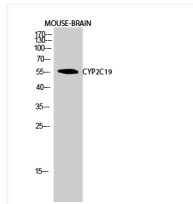
Clonality	Polyclonal
Concentration	1 mg/mL
Conjugation	Unconjugated
Purification	The antibody was affinity-purified from rabbit antiserum by affinity-chromatography using epitope-specific immunogen.
Dilution Range	WB 1:500-1:2000 IHC 1:100-1:300 IF 1:200-1:1000 ELISA 1:5000
Formulation	Liquid in PBS containing 50% Glycerol, 0.5% BSA and 0.02% Sodium Azide.
Isotype	IgG
Molecular Weight	Observed: 56kD
Storage Instruction	Store at -20°C for up to 1 year from the date of receipt, and avoid repeat freeze-thaw cycles.

TARGET INFORMATION

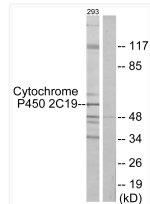
Gene ID	1557
Gene Symbol	CYP2C19
UniProt ID	CP2CJ_HUMAN
Immunogen Region	241-290 aa
Specificity	CYP2C19 Polyclonal Antibody detects endogenous levels of CYP2C19 protein.

ADDITIONAL INFORMATION

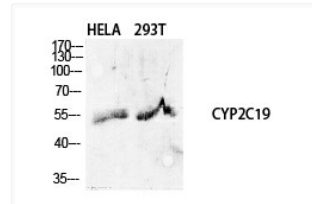
Note STRICTLY FOR FURTHER SCIENTIFIC RESEARCH USE ONLY (RUO). MUST NOT TO BE USED IN DIAGNOSTIC OR THERAPEUTIC APPLICATIONS.



Western blot analysis of mouse brain cells using CYP2C19 Polyclonal Antibody diluted at 1: 1000



Western blot analysis of lysates from 293 cells, using Cytochrome P450 2C19 Antibody. The lane on the right is blocked with the synthesized peptide.



Western blot analysis of various cells using CYP2C19 Polyclonal Antibody diluted at 1: 1000