

## Anti-CYP1A1/2 antibody (71-120 aa) (STJ92556)

### GENERAL INFORMATION

Product Type	Primary antibodies
Applications	WB/IHC/IF/ELISA
Host / Source	Rabbit
Reactivity	Human/Mouse/Rat/Monkey

### PRODUCT PROPERTIES

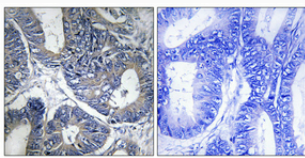
Clonality	Polyclonal
Concentration	1 mg/mL
Conjugation	Unconjugated
Purification	The antibody was affinity-purified from rabbit antiserum by affinity-chromatography using epitope-specific immunogen.
Dilution Range	WB 1:500-1:2000 IHC 1:100-1:300 IF 1:200-1:1000 ELISA 1:20000
Formulation	Liquid in PBS containing 50% Glycerol, 0.5% BSA and 0.02% Sodium Azide.
Isotype	IgG
Molecular Weight	Observed: 58kD
Storage Instruction	Store at -20°C for up to 1 year from the date of receipt, and avoid repeat freeze-thaw cycles.

### TARGET INFORMATION

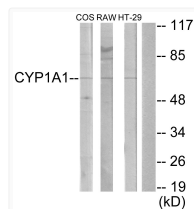
Gene ID	<a href="#">1543</a> <a href="#">1544</a>
Gene Symbol	<a href="#">CYP1A1</a> <a href="#">CYP1A2</a>
UniProt ID	<a href="#">CP1A1_HUMAN</a> <a href="#">CP1A2_HUMAN</a>
Immunogen Region	71-120 aa
Specificity	CYP1A1/2 Polyclonal Antibody detects endogenous levels of CYP1A1/2 protein.

### ADDITIONAL INFORMATION

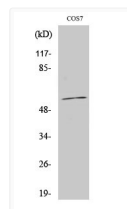
Note **STRICTLY FOR FURTHER SCIENTIFIC RESEARCH USE ONLY (RUO). MUST NOT TO BE USED IN DIAGNOSTIC OR THERAPEUTIC APPLICATIONS.**



Immunohistochemical analysis of paraffin-embedded Human colon cancer. Antibody was diluted at 1:100 (4°C overnight). High-pressure and temperature Tris-EDTA, pH8.0 was used for antigen retrieval. Negative control (right) obtained from antibody was pre-absorbed by immunogen peptide.



Western blot analysis of lysates from COS7, RAW264.7, and HT-29 cells, using Cytochrome P450 1A1/2 Antibody. The lane on the right is blocked with the synthesized peptide.



Western blot analysis of various cells using CYP1A1/2 Polyclonal Antibody