

## Anti-CYP17A1 antibody (221-270 aa) (STJ92554)

### GENERAL INFORMATION

Product Type	Primary antibodies
Applications	WB/IHC/IF/ELISA
Host / Source	Rabbit
Reactivity	Human

### PRODUCT PROPERTIES

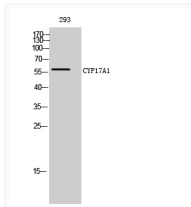
Clonality	Polyclonal
Concentration	1 mg/mL
Conjugation	Unconjugated
Purification	The antibody was affinity-purified from rabbit antiserum by affinity-chromatography using epitope-specific immunogen.
Dilution Range	WB 1:500-1:2000 IHC 1:100-1:300 IF 1:200-1:1000 ELISA 1:10000
Formulation	Liquid in PBS containing 50% Glycerol, 0.5% BSA and 0.02% Sodium Azide.
Isotype	IgG
Molecular Weight	Observed: 50kD
Storage Instruction	Store at -20°C for up to 1 year from the date of receipt, and avoid repeat freeze-thaw cycles.

### TARGET INFORMATION

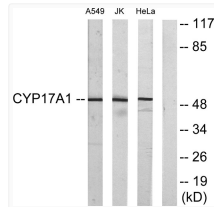
Gene ID	<a href="#">1586</a>
Gene Symbol	<a href="#">CYP17A1</a>
UniProt ID	<a href="#">CP17A_HUMAN</a>
Immunogen Region	221-270 aa
Specificity	CYP17A1 Polyclonal Antibody detects endogenous levels of CYP17A1 protein.

### ADDITIONAL INFORMATION

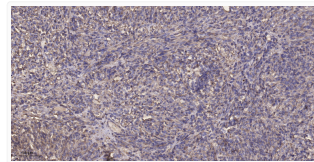
Note **STRICTLY FOR FURTHER SCIENTIFIC RESEARCH USE ONLY (RUO). MUST NOT TO BE USED IN DIAGNOSTIC OR THERAPEUTIC APPLICATIONS.**



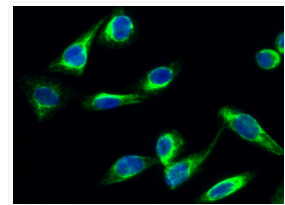
Western blot analysis of 293 cells using CYP17A1 polyclonal antibody diluted at 1:2000 STJ92554



Western blot analysis of lysates from Jurkat, A549, and HeLa cells, using Cytochrome P450 17A1 Antibody. The lane on STJ92554



Immunohistochemical analysis of paraffin-embedded human colon cancer. 1, Antibody was diluted at 1:200 (4° overnight). STJ92554



Immunofluorescence analysis of HeLa cells. 1, CYP17A1 Polyclonal Antibody (green) was diluted at 1:200 (4°C overnight). STJ92554