

Anti-CCNE2 antibody (355-404 aa) (STJ92544)

GENERAL INFORMATION

Product Type	Primary antibodies
Applications	WB/IHC/IF/ELISA
Host / Source	Rabbit
Reactivity	Human/Mouse

PRODUCT PROPERTIES

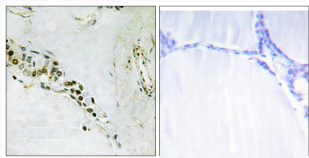
Clonality	Polyclonal
Concentration	1 mg/mL
Conjugation	Unconjugated
Purification	The antibody was affinity-purified from rabbit antiserum by affinity-chromatography using epitope-specific immunogen.
Dilution Range	WB 1:500-1:2000 IHC 1:100-1:300 IF 1:200-1:1000 ELISA 1:5000
Formulation	Liquid in PBS containing 50% Glycerol, 0.5% BSA and 0.02% Sodium Azide.
Isotype	IgG
Molecular Weight	Observed: 46kD
Storage Instruction	Store at -20°C for up to 1 year from the date of receipt, and avoid repeat freeze-thaw cycles.

TARGET INFORMATION

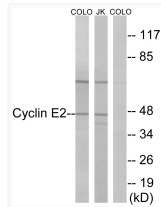
Gene ID	9134
Gene Symbol	CCNE2
UniProt ID	CCNE2_HUMAN
Immunogen Region	355-404 aa
Specificity	Cyclin E2 Polyclonal Antibody detects endogenous levels of Cyclin E2 protein.

ADDITIONAL INFORMATION

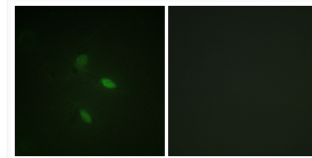
Note **STRICTLY FOR FURTHER SCIENTIFIC RESEARCH USE ONLY (RUO). MUST NOT TO BE USED IN DIAGNOSTIC OR THERAPEUTIC APPLICATIONS.**



Immunohistochemistry analysis of paraffin-embedded human thyroid gland tissue, using Cyclin E2 Antibody. The picture on the right is blocked with the synthesized peptide.



Western blot analysis of lysates from COLO and Jurkat cells, using Cyclin E2 Antibody. The lane on the right is blocked with the synthesized peptide.



Immunofluorescence analysis of NIH/3T3 cells, using Cyclin E2 Antibody. The picture on the right is blocked with the synthesized peptide.