

Anti-CUL1 antibody (727-776 aa) (STJ92522)

GENERAL INFORMATION

Product Type	Primary antibodies
Applications	WB/IHC/IF/ELISA
Host / Source	Rabbit
Reactivity	Human/Mouse/Rat

PRODUCT PROPERTIES

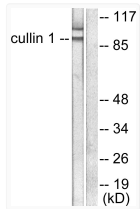
Clonality	Polyclonal
Concentration	1 mg/mL
Conjugation	Unconjugated
Purification	The antibody was affinity-purified from rabbit antiserum by affinity-chromatography using epitope-specific immunogen.
Dilution Range	WB 1:500-1:2000 IHC 1:100-1:300 IF 1:200-1:1000 ELISA 1:20000
Formulation	Liquid in PBS containing 50% Glycerol, 0.5% BSA and 0.02% Sodium Azide.
Isotype	IgG
Molecular Weight	Observed: 90kD
Storage Instruction	Store at -20°C for up to 1 year from the date of receipt, and avoid repeat freeze-thaw cycles.

TARGET INFORMATION

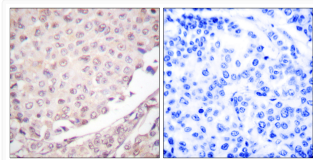
Gene ID	8454
Gene Symbol	CUL1
UniProt ID	CUL1_HUMAN
Immunogen Region	727-776 aa
Specificity	CUL-1 Polyclonal Antibody detects endogenous levels of CUL-1 protein.

ADDITIONAL INFORMATION

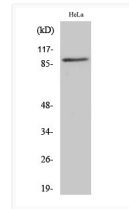
Note STRICTLY FOR FURTHER SCIENTIFIC RESEARCH USE ONLY (RUO). MUST NOT TO BE USED IN DIAGNOSTIC OR THERAPEUTIC APPLICATIONS.



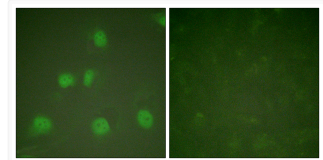
Western blot analysis of lysates from HeLa cells, using Cullin 1 Antibody. The lane on the right is blocked with the synthesized peptide.



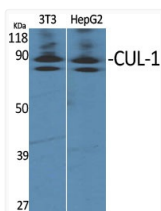
Immunohistochemistry analysis of paraffin-embedded human lung carcinoma tissue, using Cullin 1 Antibody. The picture on the right is blocked with the synthesized peptide.



Western blot analysis of HeLa cells using CUL-1 Polyclonal Antibody



Immunofluorescence analysis of HeLa cells, using Cullin 1 Antibody. The picture on the right is blocked with the synthesized peptide.



Western blot analysis of various cells using CUL-1 Polyclonal Antibody